



**CITY OF GARDNER - EXECUTIVE DEPARTMENT**  
**Mark Hawke, Mayor**

---

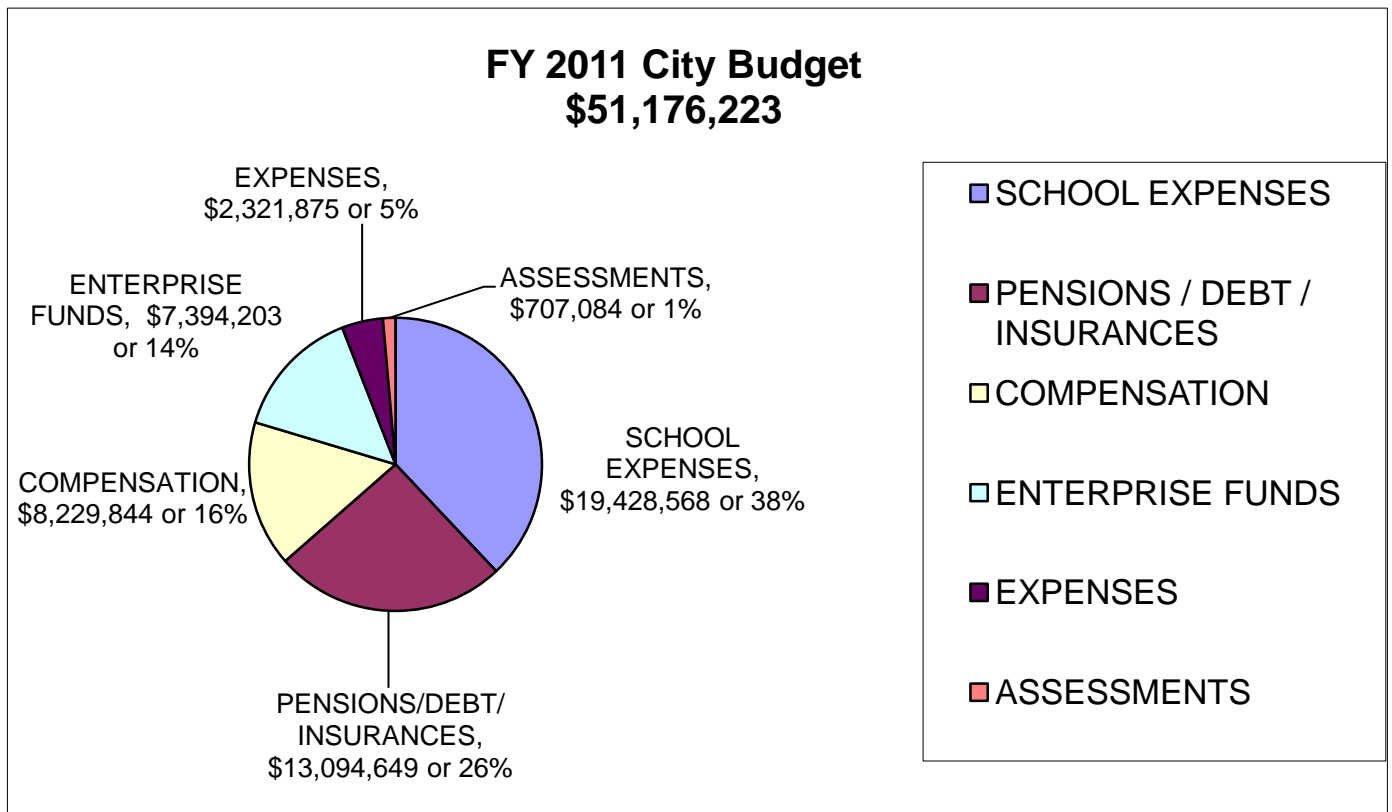
June 7, 2010

The Honorable Neil Janssens  
Council President and  
Gardner City Councilors  
95 Pleasant Street  
Gardner, MA 01440

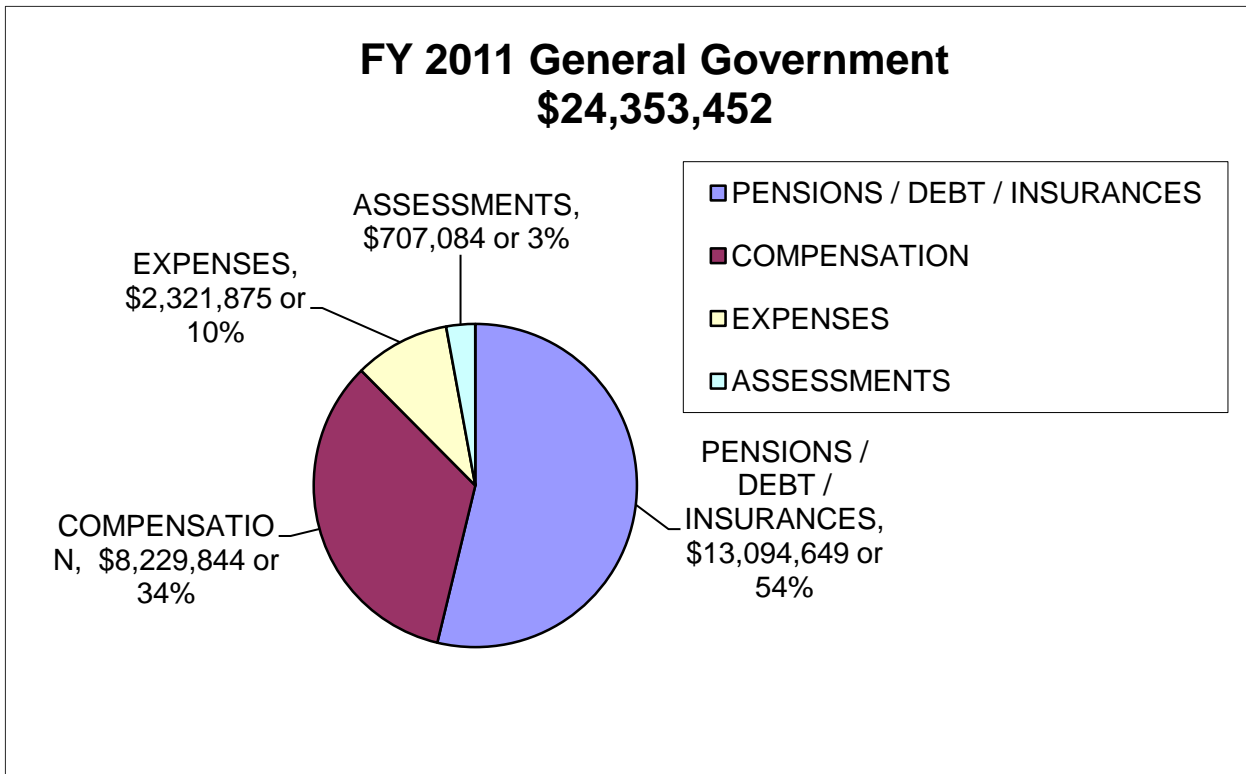
President Janssens,

I hereby submit my Fiscal Year 2011 Operating Budget for the City of Gardner.

**Fiscal Year 2011 Budget by functional area:**

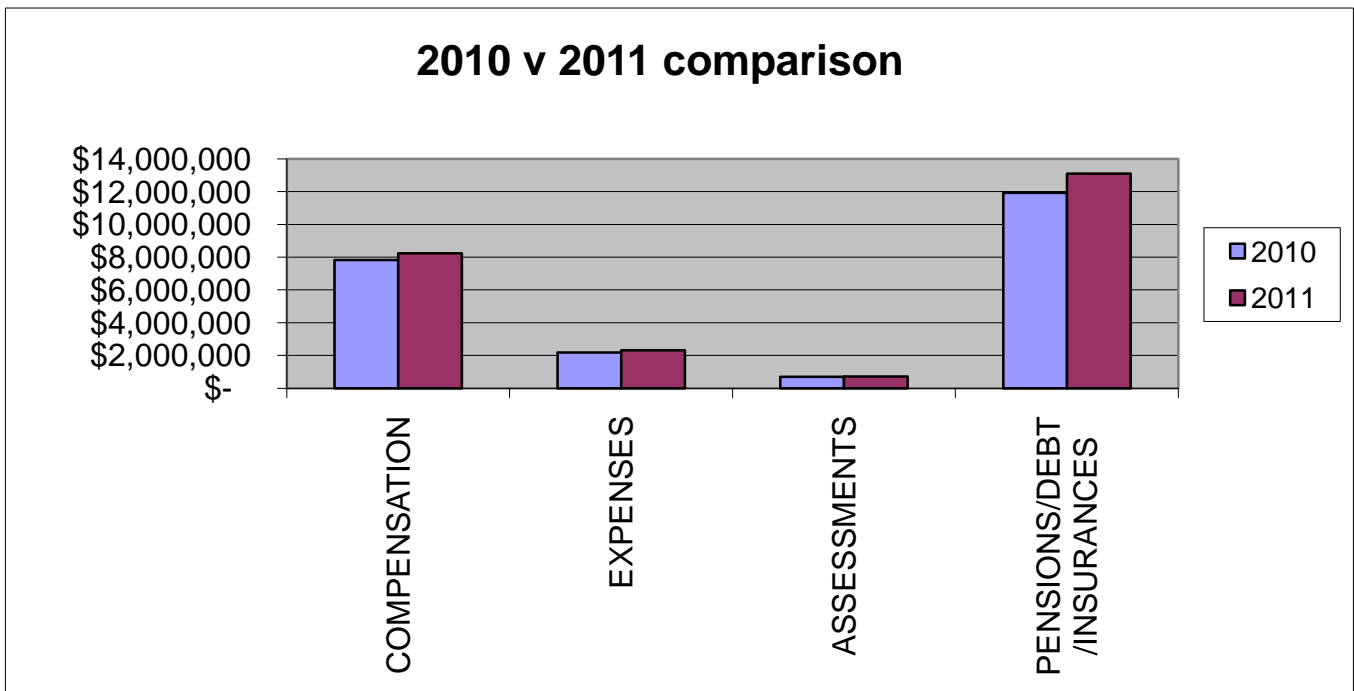


**FY 2011 General Government by functional area**



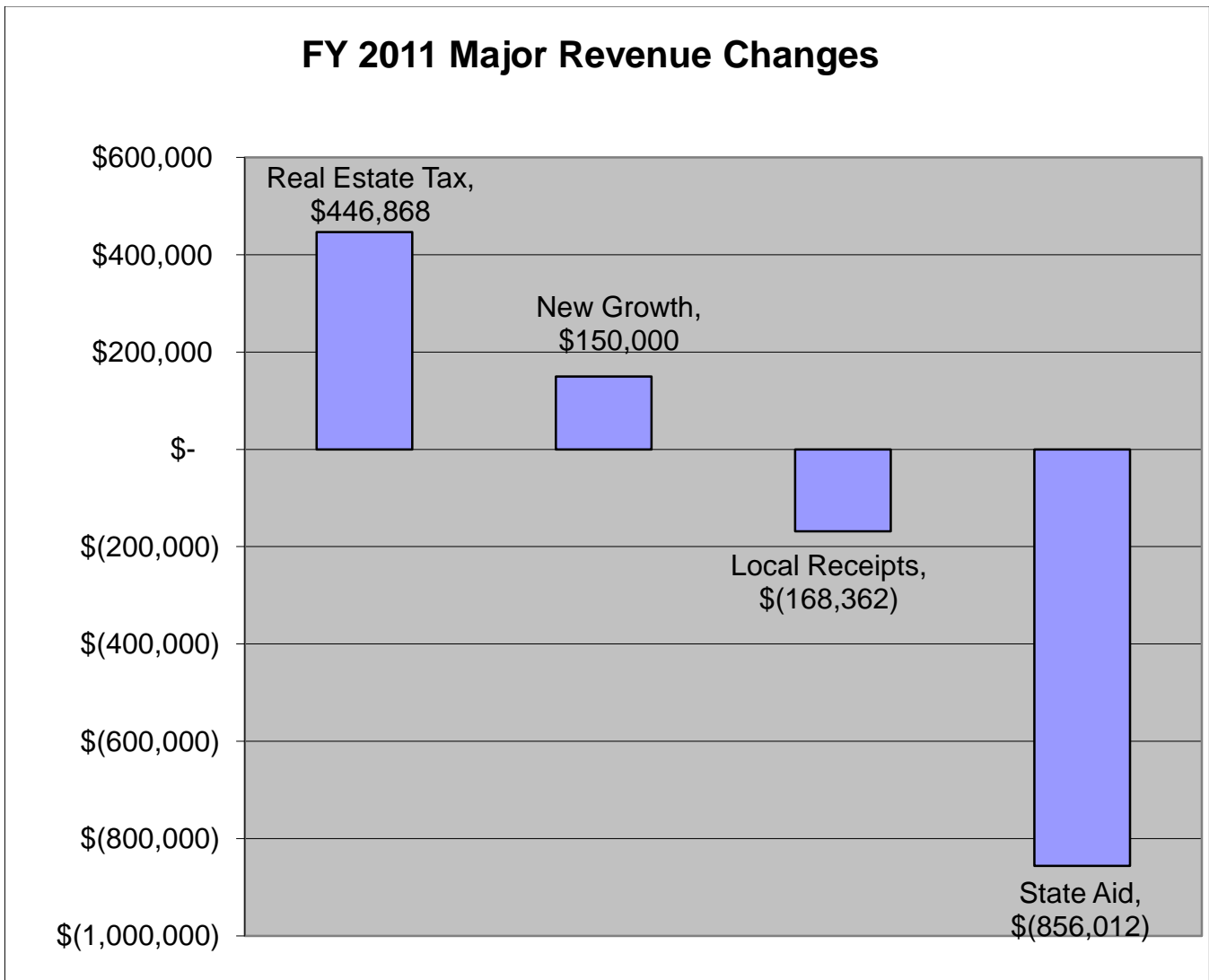
**FY 2010 Comparison to FY 2011**

The Fiscal Year 2011 General Government Budget total of \$24,353,452 represents an increase of 7.7% over the Fiscal Year 2010 Budget total of \$22,622,452 (post 9-C budget reductions).



### Fiscal Year 2011 Major Changes – Revenue

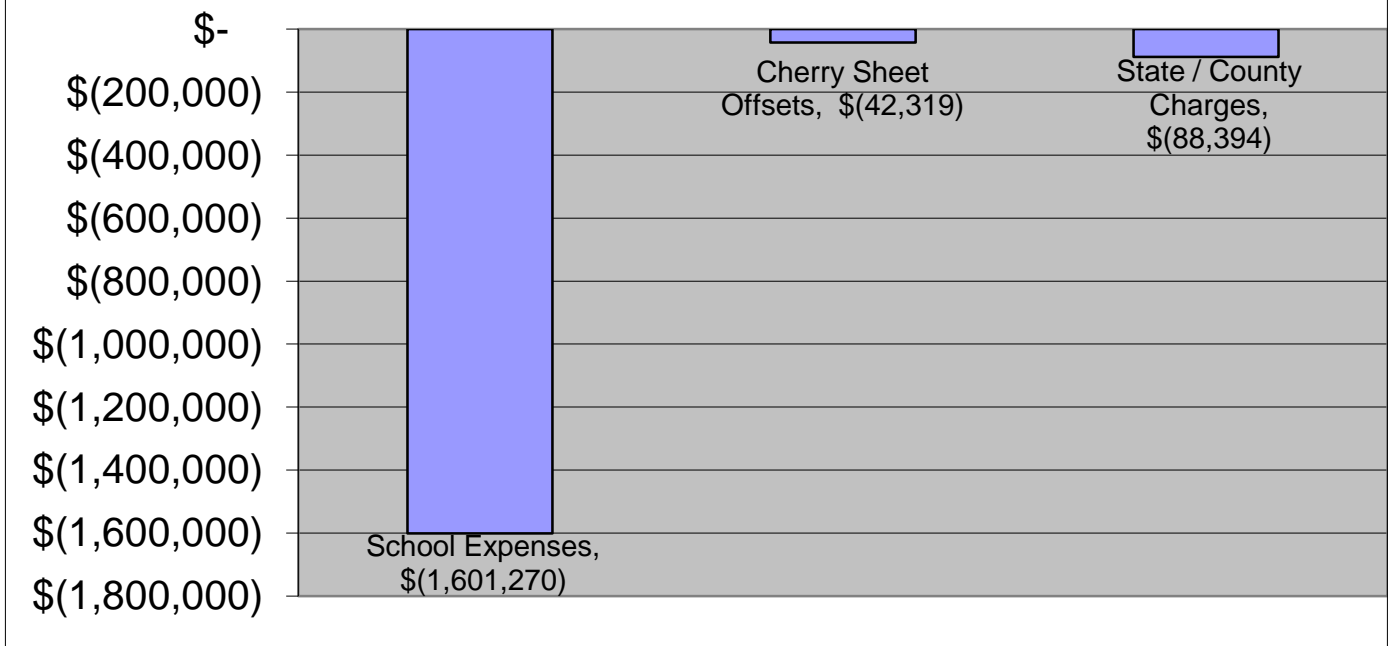
The major changes in revenue from FY10 to FY11 are the Real Estate Tax Levy increase of \$446,868, New Tax Growth estimated at \$150,000 (this is increased from FY 10 projections of \$100,000 but still below FY08 projections of \$200,000), a decrease of **<\$168,362>** in Local Receipts (due mainly to lower Excise Tax receipts) and a reduction in State –Aid of **<\$856,012>** (this is down from a FY10 reduction of **<\$1,801,411>**).



### Fiscal Year 2011 Major Changes – Expenditures

Major changes in FY 2011 budget expenditures include the reduction of School Expenses of **<\$1,601,270>**, Cherry Sheet Offset payments of **<\$42,319>**, and State & County Charges of **<\$88,394>**.

## FY 2011 Major Expense Changes



The precipitous fall in Cherry Sheet revenue should be of particular concern to all. The state continues to mandate services and procedures, yet falls far short of meeting their funding obligations to achieve their mandates. Of particular concern is the cost of health insurance, which has seen a \$2,869,031 increase since FY 2006 which equals a seventy-two percent (72%) increase in just five (5) years. This type of expense growth is clearly unsustainable.

In order to mitigate the unrelenting growth of the cost of health insurance I will continue to advocate for Plan Design authority for municipalities. This is the same authority the state's Group Insurance Commission (GIC) uses to control costs.

This year's budget realizes savings implemented through structural re-organization and various cost-savings measures implemented over the past two (2) years. While this budget is adequate, I will continue to work to employ a funding mechanism for the Capital Improvement Plan (CIP) that will be worked into our normal operating budget. Funding the CIP in our normal operating budget, along with other minor additions, changes, consolidations and reorganizations will better position Gardner for the future.

Respectfully Submitted,

Mark Hawke  
Mayor, City of Gardner

ORG/ OBJ	DEPARTMENT	2007 EXPENDED	2008 EXPENDED	2009 EXPENDED	2010 BUDGETED	2011 Mayor	2011 Council
11111	CITY COUNCIL						
1	51010 COUNCILORS SALARIES	\$ 51,750.00	\$ 57,499.80	\$ 68,875.02	\$ 71,636.00	\$ 74,501.00	\$ 74,501.00
2	51012 CLERK/ASST SAL & WAGES	\$ 3,416.63	\$ 5,000.00	\$ 5,000.00	\$ 5,000.00	\$ 4,000.00	\$ 4,000.00
3	52050 MINOR EQUIPMENT	\$ 483.24	\$ 449.85	\$ 214.20	\$ 500.00	\$ 500.00	\$ 500.00
4	52150 COMMUNICATIONS	\$ 10,771.20	\$ 7,373.28	\$ 6,655.50	\$ 8,000.00	\$ 8,000.00	\$ 8,000.00
5	52170 PROFESSIONAL DEV & TRAVEL	\$ -	\$ -	\$ -	\$ -	\$ -	\$ -
6	52230 OFFICE SUPPLIES	\$ 506.92	\$ 1,013.23	\$ 417.21	\$ 1,000.00	\$ 1,000.00	\$ 1,000.00
7	55004 TRI-CITY COUNCIL DINNER	\$ -	\$ -	\$ -	\$ -	\$ -	\$ -
8	55010 GOVERNMENT PICTURE	\$ 855.71	\$ -	\$ 822.00	\$ -	\$ 900.00	\$ 900.00
9	* TOT, 11111	\$ 67,783.70	\$ 71,336.16	\$ 81,983.93	\$ 86,136.00	\$ 88,901.00	\$ 88,901.00

11121 MAYOR

12	51010 MAYOR SALARY & WAGES	\$ 65,000.00	\$ 68,400.00	\$ 75,322.50	\$ 78,348.00	\$ 78,953.00	\$ 78,953.00
13	51011 ADMIN ASSISTANT SALARY & WAGES	\$ -	\$ -	\$ -	\$ -	\$ -	\$ -
14	51012 SECRETARY SALARY & WAGES	\$ 35,439.56	\$ 39,234.71	\$ 40,153.80	\$ 39,847.00	\$ 40,154.00	\$ 40,154.00
15	51023 TEMP SALARY & WAGES	\$ 3,216.77	\$ 1,563.61	\$ 1,237.00	\$ 1,500.00	\$ 2,000.00	\$ 2,000.00
16	51460 LONGEVITY	\$ 210.00	\$ 240.00	\$ -	\$ -	\$ -	\$ -
17	51551 TERMINATION LEAVE	\$ -	\$ 2,384.61	\$ -	\$ -	\$ -	\$ -
18	52030 REPAIRS & MAINTENANCE	\$ 637.35	\$ 669.70	\$ 1,197.43	\$ 900.00	\$ 900.00	\$ 900.00
19	52050 MINOR EQUIPMENT	\$ -	\$ -	\$ -	\$ -	\$ 500.00	\$ 500.00
20	52150 COMMUNICATIONS	\$ 583.20	\$ 505.96	\$ 2,605.90	\$ 1,900.00	\$ 1,900.00	\$ 1,900.00
21	52170 PROFESSIONAL DEV & TRAVEL	\$ 646.76	\$ 96.69	\$ 747.78	\$ 900.00	\$ 900.00	\$ 900.00
22	52190 PROFESSIONAL SERVICES	\$ -	\$ 4,420.00	\$ 7,156.00	\$ 5,000.00	\$ 5,400.00	\$ 5,400.00
23	52230 OFFICE SUPPLIES	\$ 121.26	\$ 2,243.30	\$ 1,122.38	\$ 900.00	\$ 900.00	\$ 900.00
24	55010 MAYOR'S PORTRAIT	\$ -	\$ -	\$ 542.90	\$ -	\$ -	\$ -
25	57043 PRIOR YR UNPAID BILL	\$ -	\$ -	\$ -	\$ -	\$ -	\$ -
26	* TOT, 11121	\$ 105,854.90	\$ 119,758.58	\$ 130,085.69	\$ 129,295.00	\$ 131,607.00	\$ 131,607.00

11135 CITY AUDITOR

29	51010 DEPT HEAD SALARY & WAGES	\$ 59,683.00	\$ 68,189.80	\$ 70,269.03	\$ 69,731.00	\$ 70,270.00	\$ 70,270.00
30	51012 CLERK/ASST SAL & WAGES	\$ 32,358.56	\$ 35,297.64	\$ 34,734.72	\$ 34,207.00	\$ 34,344.00	\$ 34,344.00
31	51030 OVERTIME	\$ -	\$ -	\$ -	\$ -	\$ -	\$ -
32	51460 LONGEVITY	\$ 600.00	\$ 660.00	\$ 520.00	\$ 780.00	\$ 560.00	\$ 560.00
33	51551 TERMINATION LEAVE	\$ -	\$ -	\$ -	\$ -	\$ -	\$ -
34	52030 REPAIRS & MAINTENANCE	\$ 110.20	\$ 145.74	\$ 609.52	\$ 100.00	\$ 100.00	\$ 100.00
35	52050 MINOR EQUIPMENT	\$ -	\$ -	\$ 1,050.53	\$ 100.00	\$ 100.00	\$ 100.00
36	52150 COMMUNICATIONS	\$ -	\$ -	\$ -	\$ -	\$ -	\$ -
37	52170 PROFESSIONAL DEV & TRAVEL	\$ 689.03	\$ 70.00	\$ 177.30	\$ 700.00	\$ 700.00	\$ 700.00
38	52190 PROFESSIONAL SERVICES	\$ 17,000.00	\$ 21,300.00	\$ 21,300.00	\$ 33,300.00	\$ 30,200.00	\$ 30,200.00
39	52230 OFFICE SUPPLIES	\$ 573.86	\$ 856.45	\$ 1,038.28	\$ 1,000.00	\$ 1,000.00	\$ 1,000.00
40	* TOT, 11135	\$ 111,014.65	\$ 126,519.63	\$ 129,699.38	\$ 139,918.00	\$ 137,274.00	\$ 137,274.00

10

11

12

13

14

15

16

17

18

19

20

21

22

23

24

25

26

27

28

29

30

31

32

33

34

35

36

37

38

39

40

41

42

43

ORG/ OBJ	DEPARTMENT	2007 EXPENDED	2008 EXPENDED	2009 EXPENDED	2010 BUDGETED	2011 Mayor	2011 Council
44	11138 PURCHASING						
45	51010 DEPT HEAD SALARY & WAGES	\$ 53,234.22	\$ 62,878.64	\$ 65,250.00	\$ 64,750.00	\$ 65,250.00	\$ 65,250.00
46	51012 SENIOR ACCOUNT CLERK SAL & WAG	\$ 30,315.08	\$ 34,621.44	\$ 22,126.47	\$ 28,000.00	\$ 28,620.00	\$ 28,620.00
47	51013 ACCOUNT CLERK SALARY & WAGES	\$ 24,818.56	\$ 25,765.87	\$ 7,252.58	\$ -	\$ -	\$ -
48	51023 TEMP SALARY & WAGES	\$ -	\$ -	\$ 2,630.33	\$ -	\$ -	\$ -
49	51030 OVERTIME			\$ 207.53			
50	51460 LONGEVITY	\$ 675.00	\$ 720.00	\$ 565.00	\$ 810.00	\$ 855.00	\$ 855.00
51	52050 MINOR EQUIPMENT	\$ -	\$ -	\$ 150.00	\$ 150.00	\$ 150.00	\$ 150.00
52	52150 COMMUNICATIONS	\$ 193.80	\$ 211.75	\$ 300.34	\$ 400.00	\$ 400.00	\$ 400.00
53	52170 PROFESSIONAL DEV & TRAVEL	\$ 978.02	\$ 1,182.71	\$ 786.21	\$ 1,250.00	\$ 1,500.00	\$ 1,500.00
54	52190 PROFESSIONAL SERVICES	\$ 1,661.75	\$ 1,209.25	\$ 1,390.00	\$ 1,500.00	\$ 1,250.00	\$ 1,250.00
55	52230 OFFICE SUPPLIES	\$ 1,115.48	\$ 1,100.46	\$ 1,683.22	\$ 1,500.00	\$ 1,250.00	\$ 1,250.00
56	* TOT, 11138	\$ 112,991.91	\$ 127,690.12	\$ 102,341.68	\$ 98,360.00	\$ 99,275.00	\$ 99,275.00
57							
58	11141 ASSESSORS						
59	51010 CHAIRMAN ASSESS SAL&WAGES	\$ 56,196.66	\$ 63,475.74	\$ 65,250.00	\$ 64,750.00	\$ 70,270.00	\$ 70,270.00
60	51012 CLERK/ASST SAL & WAGES	\$ 30,817.80	\$ 35,130.60	\$ 34,535.99	\$ 34,045.00	\$ 35,131.00	\$ 35,131.00
61	51013 P/T CLERK/ASST SAL & WGS	\$ 15,409.16	\$ 15,932.48	\$ 3,647.00	\$ -	\$ -	\$ -
62	51014 ASSESSORS PART TIME SAL&W	\$ 4,000.08	\$ 2,500.05	\$ 2,000.04	\$ 4,001.00	\$ 4,001.00	\$ 4,001.00
63	51460 LONGEVITY	\$ 1,305.00	\$ 1,380.00	\$ 1,255.00	\$ 1,230.00	\$ 360.00	\$ 360.00
64	52050 MINOR EQUIPMENT	\$ -	\$ -	\$ -	\$ -	\$ -	\$ -
65	52170 PROFESSIONAL DEV & TRAVEL	\$ 264.00	\$ 201.00	\$ 201.00	\$ 264.00	\$ 1,000.00	\$ 1,000.00
66	52190 PROFESSIONAL SERVICES	\$ 111.85	\$ 123.35	\$ 122.10	\$ 300.00	\$ 300.00	\$ 300.00
67	52230 OFFICE SUPPLIES	\$ 4,787.97	\$ 4,267.73	\$ 5,026.62	\$ 7,000.00	\$ 3,000.00	\$ 3,000.00
68	55030 COMPUTER SOFTWARE	\$ -	\$ -	\$ -	\$ -	\$ -	\$ -
69	55040 VALUATION MAINTENANCE	\$ 6,700.00	\$ 5,400.00	\$ 6,800.00	\$ 7,300.00	\$ 7,300.00	\$ 7,300.00
70	55050 VALUATION UPDATE	\$ 49,475.00	\$ 40,125.00	\$ 69,431.00	\$ 105,000.00	\$ 65,000.00	\$ 65,000.00
71	* TOT, 11141	\$ 169,067.52	\$ 168,535.95	\$ 188,268.75	\$ 223,890.00	\$ 186,362.00	\$ 186,362.00
72	11145 CITY TREASURER						
73	51010 DEPT HEAD SALARY & WAGES	\$ 56,196.66	\$ 63,475.74	\$ 65,250.00	\$ 72,250.00	\$ 72,780.00	\$ 72,780.00
74	51011 ASSISTANT SALARY & WAGES	\$ 22,029.24	\$ 24,459.35	\$ 23,900.78	\$ 31,809.00	\$ 36,199.00	\$ 36,199.00
75	51015 COMP PROG/OP SAL & WAGES	\$ 49,154.30	\$ 54,033.47	\$ 55,211.42	\$ 54,789.00	\$ 55,212.00	\$ 55,212.00
76	51018 PARKING METER CLERK	\$ 9,750.00	\$ 9,787.50	\$ 7,822.50	\$ 7,830.00	\$ 7,830.00	\$ 7,830.00
77	51030 OVERTIME	\$ -	\$ -	\$ -	\$ 400.00	\$ 400.00	\$ 400.00
78	51460 LONGEVITY	\$ 1,110.00	\$ 1,170.00	\$ 830.00	\$ 1,365.00	\$ 1,440.00	\$ 1,440.00
79	52033 PARKING METER MAINTENANCE	\$ 3,409.87	\$ 70.26	\$ 2,902.00	\$ 4,000.00	\$ 4,000.00	\$ 4,000.00
80	52040 CENTRAL COMPUTER	\$ 121,760.52	\$ 84,644.99	\$ 91,166.19	\$ 105,000.00	\$ 115,000.00	\$ 115,000.00
81	52050 MINOR EQUIPMENT	\$ -	\$ 755.03	\$ 5,935.20	\$ 800.00	\$ 800.00	\$ 800.00
82	52170 PROFESSIONAL DEV & TRAVEL	\$ 572.52	\$ 727.47	\$ 1,276.09	\$ 1,000.00	\$ 1,000.00	\$ 1,000.00
83	52190 PROFESSIONAL SERVICES	\$ 15,359.17	\$ 15,759.09	\$ 18,146.60	\$ 36,500.00	\$ 36,500.00	\$ 36,500.00
84	52230 OFFICE SUPPLIES	\$ 558.25	\$ 1,973.70	\$ 727.03	\$ 1,750.00	\$ 1,750.00	\$ 1,750.00
85	52250 POSTAGE	\$ 44,097.87	\$ 47,098.82	\$ 52,516.80	\$ 43,500.00	\$ 48,500.00	\$ 48,500.00
86	52280 CENTRAL COPIER	\$ 10,351.25	\$ 2,652.12	\$ 1,628.35	\$ 4,000.00	\$ 4,000.00	\$ 4,000.00
87	* TOT, 11145	\$ 334,349.65	\$ 306,607.54	\$ 327,312.96	\$ 364,993.00	\$ 385,411.00	\$ 385,411.00

ORG/ OBJ	DEPARTMENT	2007 EXPENDED	2008 EXPENDED	2009 EXPENDED	2010 BUDGETED	2011 Mayor	2011 Council
88							
89	11146 TAX COLLECTOR						
90	51012 SENIOR ACCT CLERK SAL&WGS	\$ 32,358.56	\$ 35,297.64	\$ 34,672.58	\$ 34,207.00	\$ 35,298.00	\$ 35,298.00
91	51013 SENIOR CLERK	\$ 30,817.80	\$ 31,864.45	\$ 16,359.52	\$ -	\$ -	\$ -
92	51014 PART TIME CLERK SAL&WAGES	\$ -	\$ -	\$ -	\$ -	\$ -	\$ -
93	51460 LONGEVITY	\$ 930.00	\$ 1,110.00	\$ 990.00	\$ 1,020.00	\$ 1,050.00	\$ 1,050.00
94	51551 TERMINATION LEAVE	\$ -	\$ -	\$ -	\$ -	\$ -	\$ -
95	52030 REPAIRS & MAINTENANCE	\$ -	\$ -	\$ -	\$ -	\$ -	\$ -
96	52050 MINOR EQUIPMENT	\$ 980.05	\$ 113.15	\$ 13.01	\$ 500.00	\$ 500.00	\$ 500.00
97	52150 COMMUNICATIONS	\$ 667.20	\$ 627.30	\$ 765.00	\$ 1,000.00	\$ 1,000.00	\$ 1,000.00
98	52170 PROFESSIONAL DEV & TRAVEL	\$ 120.00	\$ 120.00	\$ 90.00	\$ 500.00	\$ 500.00	\$ 500.00
99	52190 PROFESSIONAL SERVICES	\$ 2,063.17	\$ 1,575.00	\$ 5,267.12	\$ 2,400.00	\$ 2,400.00	\$ 2,400.00
100	52230 OFFICE SUPPLIES	\$ 2,782.78	\$ 1,968.94	\$ 1,751.09	\$ 2,000.00	\$ 2,000.00	\$ 2,000.00
101	52250 POSTAGE	\$ -	\$ -	\$ -	\$ 7,500.00	\$ 8,000.00	\$ 8,000.00
102	* TOT/ 11146	\$ 70,719.56	\$ 72,676.48	\$ 59,908.32	\$ 49,127.00	\$ 50,748.00	\$ 50,748.00
103							
104	11151 LAW						
105	51010 DEPT HEAD SALARY & WAGES	\$ 41,219.88	\$ 57,872.84	\$ 69,767.39	\$ 69,233.00	\$ 69,768.00	\$ 69,768.00
106	51011 ASSISTANT SALARY & WAGES	\$ 27,808.56	\$ 31,428.78	\$ 38,563.80	\$ 38,269.00	\$ 38,564.00	\$ 38,564.00
107	52170 PROFESSIONAL DEV & TRAVEL	\$ -	\$ 560.00	\$ 2,437.56	\$ 1,000.00	\$ 1,000.00	\$ 1,000.00
108	52230 OFFICE SUPPLIES	\$ 3,500.00	\$ 1,282.41	\$ 675.79	\$ 2,500.00	\$ 2,500.00	\$ 2,500.00
109	55051 DEPOSITION & DISCOVERY	\$ 2,000.00	\$ 285.00	\$ 295.66	\$ 500.00	\$ 500.00	\$ 500.00
110	* TOT/ 11151	\$ 74,528.44	\$ 91,429.03	\$ 111,740.20	\$ 111,502.00	\$ 112,332.00	\$ 112,332.00
111							
112	11152 PERSONNEL						
113	51010 DEPT HEAD SALARY & WAGES	\$ 59,580.30	\$ 68,169.10	\$ 70,269.03	\$ 69,731.00	\$ 70,270.00	\$ 70,270.00
114	51023 TEMP P/T CLERK/TYPIST	\$ 5,516.39	\$ 5,411.52	\$ 5,145.28	\$ 13,200.00	\$ 16,363.00	\$ 16,363.00
115	51460 LONGEVITY	\$ 150.00	\$ 180.00	\$ 10.00	\$ 240.00	\$ 270.00	\$ 270.00
116	51551 TERMINATION LEAVE	\$ -	\$ -	\$ -	\$ -	\$ -	\$ -
117	52050 MINOR EQUIPMENT	\$ -	\$ 185.47	\$ -	\$ 250.00	\$ 1,500.00	\$ 1,500.00
118	52150 COMMUNICATIONS	\$ 306.72	\$ 1,421.20	\$ 402.27	\$ 1,000.00	\$ 1,000.00	\$ 1,000.00
119	52170 PROFESSIONAL DEV & TRAVEL	\$ 703.79	\$ 814.42	\$ 523.05	\$ 700.00	\$ 2,000.00	\$ 2,000.00
120	52190 PROFESSIONAL SERVICES	\$ 1,943.97	\$ 8,062.56	\$ 2,258.84	\$ 2,490.00	\$ 7,500.00	\$ 7,500.00
121	52191 V.I.P.S. PROGRAM	\$ -	\$ -	\$ -	\$ -	\$ 10,000.00	\$ 10,000.00
122	52230 OFFICE SUPPLIES	\$ 552.70	\$ 404.15	\$ 228.44	\$ 1,500.00	\$ 1,500.00	\$ 1,500.00
123	57200 CLEANING CONTRACT	\$ -	\$ -	\$ 8,890.00	\$ -	\$ -	\$ -
124	* TOT/ 11152	\$ 68,753.87	\$ 84,648.42	\$ 87,726.91	\$ 89,111.00	\$ 110,403.00	\$ 110,403.00

125  
126  
127  
128  
129  
130  
131

ORG/ OBJ	DEPARTMENT	2007 EXPENDED	2008 EXPENDED	2009 EXPENDED	2010 BUDGETED	2011 Mayor	2011 Council
132	11161 CITY CLERK						
133	51010 DEPT HEAD SALARY & WAGES	\$ 57,535.40	\$ 63,745.60	\$ 65,250.00	\$ 57,250.00	\$ 60,231.00	\$ 60,231.00
134	51011 ASSISTANT SALARY & WAGES	\$ 32,959.68	\$ 36,198.61	\$ 35,557.59	\$ 35,081.00	\$ 36,199.00	\$ 36,199.00
135	51012 SENIOR CLERK SAL & WAGES	\$ 30,817.80	\$ 31,864.45	\$ 31,300.26	\$ 30,881.00	\$ 26,352.00	\$ 26,352.00
136	51460 LONGEVITY	\$ 2,220.00	\$ 2,310.00	\$ 2,200.00	\$ 1,200.00	\$ 750.00	\$ 750.00
137	52050 MINOR EQUIPMENT	\$ 595.00	\$ 328.15	\$ 120.00	\$ 500.00	\$ 500.00	\$ 500.00
138	52170 PROFESSIONAL DEV & TRAVEL	\$ 480.00	\$ 275.00	\$ 400.00	\$ 500.00	\$ 500.00	\$ 500.00
139	52190 PROFESSIONAL SERVICES	\$ 843.50	\$ -	\$ 1,887.00	\$ 2,000.00	\$ 2,000.00	\$ 2,000.00
140	52230 OFFICE SUPPLIES	\$ 843.56	\$ 624.98	\$ 295.67	\$ 1,000.00	\$ 1,000.00	\$ 1,000.00
141	* TOT/ 11161	\$ 126,294.94	\$ 135,346.79	\$ 137,010.52	\$ 128,412.00	\$ 127,532.00	\$ 127,532.00
142							
143	11162 ELECTION & REGISTRATION						
144	51010 BD OF REGISTRATION SAL&WA	\$ 3,200.00	\$ 3,508.33	\$ 3,616.66	\$ 3,700.00	\$ 2,300.00	\$ 2,300.00
145	51013 ELECTION OFFICERS SAL&WGS	\$ 10,468.88	\$ 12,982.18	\$ 12,577.50	\$ 14,000.00	\$ 14,000.00	\$ 14,000.00
146	52050 MINOR EQUIPMENT	\$ -	\$ -	\$ -	\$ -	\$ -	\$ -
147	52150 COMMUNICATIONS	\$ 1,081.20	\$ 799.68	\$ 1,050.60	\$ 1,500.00	\$ 1,500.00	\$ 1,500.00
148	52190 PROFESSIONAL SERVICES	\$ 15,412.30	\$ 20,471.29	\$ 12,515.13	\$ 20,000.00	\$ 20,000.00	\$ 20,000.00
149	52230 OFFICE SUPPLIES	\$ 1,931.71	\$ 2,651.03	\$ 2,086.12	\$ 3,000.00	\$ 3,000.00	\$ 3,000.00
150	55202 VOTING EQUIPMENT	\$ -	\$ -	\$ -	\$ -	\$ -	\$ -
151	* TOT/ 11162	\$ 32,094.09	\$ 40,412.51	\$ 31,846.01	\$ 42,200.00	\$ 40,800.00	\$ 40,800.00
152							
153	11165 LICENSE COMMISSION						
154	51012 CLERK/ASST SAL & WAGES	\$ -	\$ -	\$ -	\$ -	\$ -	\$ -
155	51014 LICENSE BD SALARY & WAGES	\$ 1,700.00	\$ 1,700.00	\$ 1,700.00	\$ 1,700.00	\$ 1,700.00	\$ 1,700.00
156	51030 OVERTIME	\$ -	\$ -	\$ -	\$ 100.00	\$ 100.00	\$ 100.00
157	52150 COMMUNICATIONS	\$ 40.00	\$ 45.90	\$ 48.00	\$ 300.00	\$ 300.00	\$ 300.00
158	52190 PROFESSIONAL SERVICES	\$ -	\$ 50.00	\$ -	\$ -	\$ -	\$ -
159	52230 OFFICE SUPPLIES	\$ -	\$ 141.09	\$ -	\$ 300.00	\$ 300.00	\$ 300.00
160	* TOT/ 11165	\$ 1,740.00	\$ 1,936.99	\$ 1,748.00	\$ 2,400.00	\$ 2,400.00	\$ 2,400.00
161							
162	11171 CONSERVATION COMMISSION						
163	51011 CONSERVATON AGENT SAL&WGS	\$ 25,703.08	\$ 22,590.00	\$ 26,372.41	\$ 20,000.00	\$ 21,261.00	\$ 21,261.00
164	51014 BOARD & COMM SAL & WAGES	\$ 3,700.00	\$ 3,700.00	\$ 3,641.67	\$ 3,700.00	\$ 3,700.00	\$ 3,700.00
165	51460 LONGEVITY	\$ 135.00	\$ 150.00	\$ -	\$ -	\$ -	\$ -
166	52170 PROFESSIONAL DEV & TRAVEL	\$ -	\$ -	\$ -	\$ -	\$ -	\$ -
167	52190 PROFESSIONAL SERVICES	\$ -	\$ -	\$ -	\$ -	\$ -	\$ -
168	52230 OFFICE SUPPLIES	\$ 103.00	\$ 200.00	\$ 52.00	\$ 200.00	\$ 400.00	\$ 400.00
169	* TOT/ 11171	\$ 29,641.08	\$ 26,640.00	\$ 30,066.08	\$ 23,900.00	\$ 25,361.00	\$ 25,361.00

170  
171  
172  
173  
174  
175

ORG/ OBJ	DEPARTMENT	2007 EXPENDED	2008 EXPENDED	2009 EXPENDED	2010 BUDGETED	2011 Mayor	2011 Council
176	11175 PLANNING BOARD						
177	51011 PLANNING AGENT SALARY & WAGES	\$ 1,594.10	\$ 26,578.16	\$ -	\$ -	\$ -	\$ -
178	51014 BOARD & COMM SAL & WAGES	\$ 3,200.00	\$ 3,150.00	\$ 3,200.00	\$ 3,200.00	\$ 3,200.00	\$ 3,200.00
179	51460 LONGEVITY	\$ -	\$ 15.00	\$ -	\$ -	\$ -	\$ -
180	52030 REPAIRS & MAINTENANCE	\$ 125.00	\$ 155.00	\$ -	\$ 200.00	\$ 200.00	\$ 200.00
181	52150 COMMUNICATIONS	\$ 310.50	\$ 183.93	\$ 15.26	\$ 400.00	\$ 400.00	\$ 400.00
182	52170 PROFESSIONAL DEV & TRAVEL	\$ -	\$ -	\$ -	\$ -	\$ -	\$ -
183	52190 PROFESSIONAL SERVICES	\$ -	\$ -	\$ -	\$ -	\$ -	\$ -
184	52198 OPEN SPACE PLAN	\$ -	\$ -	\$ -	\$ -	\$ -	\$ -
185	52230 OFFICE SUPPLIES	\$ -	\$ -	\$ -	\$ -	\$ -	\$ -
186	* TOT, 11175	\$ 5,229.60	\$ 30,082.09	\$ 3,215.26	\$ 3,800.00	\$ 3,800.00	\$ 3,800.00
187							
188	11176 ZONING BOARD OF APPEALS						
189	51014 BOARD & COMM SAL & WAGES	\$ 2,200.00	\$ 2,175.00	\$ 2,200.00	\$ 2,200.00	\$ 2,200.00	\$ 2,200.00
190	52150 COMMUNICATIONS	\$ 3,289.14	\$ 2,791.20	\$ 1,396.80	\$ 1,000.00	\$ 3,300.00	\$ 3,300.00
191	52170 PROFESSIONAL DEV & TRAVEL	\$ -	\$ 130.00	\$ -	\$ 300.00	\$ 200.00	\$ 200.00
192	52230 OFFICE SUPPLIES	\$ 134.47	\$ 204.29	\$ 148.68	\$ 300.00	\$ 300.00	\$ 300.00
193	* TOT, 11176	\$ 5,623.61	\$ 5,300.49	\$ 3,745.48	\$ 3,800.00	\$ 6,000.00	\$ 6,000.00
194							
195	11182 COMMUNITY DEVELOPMENT						
196	51010 DEPT HEAD SALARY & WAGES	\$ 55,363.88	\$ 65,250.00	\$ 65,250.00	\$ 64,750.00	\$ 65,250.00	\$ 65,250.00
197	51012 CLERK/ASST SAL & WAGES	\$ 25,677.53	\$ 27,478.60	\$ 27,241.03	\$ 28,126.00	\$ 29,247.00	\$ 29,247.00
198	51025 PARKER POND SALARY & WAGES	\$ -	\$ -	\$ -	\$ -	\$ -	\$ -
199	51460 LONGEVITY	\$ 705.00	\$ 765.00	\$ 625.00	\$ 885.00	\$ 945.00	\$ 945.00
200	52030 REPAIRS & MAINTENANCE	\$ 153.50	\$ 140.43	\$ -	\$ 250.00	\$ 250.00	\$ 250.00
201	52150 COMMUNICATIONS	\$ -	\$ -	\$ -	\$ -	\$ -	\$ -
202	52170 PROFESSIONAL DEV & TRAVEL	\$ -	\$ -	\$ -	\$ -	\$ -	\$ -
203	52190 PROFESSIONAL SERVICES	\$ 3,570.00	\$ 2,450.00	\$ -	\$ -	\$ -	\$ -
204	52230 OFFICE SUPPLIES	\$ 500.00	\$ 538.90	\$ 278.23	\$ 550.00	\$ 550.00	\$ 550.00
205	55191 PARKER POND CONSULTANT EX	\$ -	\$ -	\$ -	\$ -	\$ -	\$ -
206	55192 PARKER POND RESTORATION PROJEC	\$ -	\$ -	\$ -	\$ -	\$ -	\$ -
207	55195 MATCH-NO CENTRAL PATHWAY EXP	\$ -	\$ -	\$ -	\$ -	\$ -	\$ -
208	55203 CONANT BALL SITE INVESTIGATION	\$ -	\$ -	\$ -	\$ -	\$ -	\$ -
209	55208 CHAMBER MARKETING CONTRACT	\$ -	\$ -	\$ -	\$ -	\$ -	\$ -
210	56906 DOWNTOWN PARTNERSHIP PROG	\$ -	\$ -	\$ -	\$ -	\$ -	\$ -
211	57800 MARY KANE BUILDING REPAIRS	\$ -	\$ -	\$ -	\$ -	\$ -	\$ -
212	* TOT, 11182	\$ 85,969.91	\$ 96,622.93	\$ 93,394.26	\$ 94,561.00	\$ 96,242.00	\$ 96,242.00

213  
214  
215  
216  
217  
218  
219

ORG/ OBJ	DEPARTMENT	2007 EXPENDED	2008 EXPENDED	2009 EXPENDED	2010 BUDGETED	2011 Mayor	2011 Council
220	11192 CITY HALL MAINTENANCE						
221	51016 CUSTODIAN SALARY & WAGES	\$ 68,107.54	\$ 59,254.71	\$ 56,050.81	\$ 66,859.00	\$ 73,216.00	\$ 73,216.00
222	51030 OVERTIME	\$ 2,357.08	\$ 2,600.17	\$ 1,931.83	\$ 2,500.00	\$ 2,500.00	\$ 2,500.00
223	51031 BUILDING CHECKS	\$ 3,409.02	\$ 2,819.95	\$ -	\$ -	\$ -	\$ -
224	51100 SHIFT DIFFERENTIAL	\$ 1,007.50	\$ 984.75	\$ 669.88	\$ 1,000.00	\$ 1,000.00	\$ 1,000.00
225	51460 LONGEVITY	\$ 660.00	\$ 720.00	\$ -	\$ -	\$ -	\$ -
226	51551 TERMINATION LEAVE	\$ -	\$ 15,776.96	\$ -	\$ -	\$ -	\$ -
227	52030 REPAIRS & MAINTENANCE	\$ 37,841.56	\$ 40,682.33	\$ 27,784.12	\$ 20,000.00	\$ 25,000.00	\$ 25,000.00
228	52050 MINOR EQUIPMENT	\$ 90.80	\$ 598.93	\$ 3,801.18	\$ 3,000.00	\$ 3,000.00	\$ 3,000.00
229	52110 ENERGY & UTILITIES	\$ 72,279.15	\$ 86,838.78	\$ 90,336.41	\$ 70,000.00	\$ 60,000.00	\$ 60,000.00
230	52150 COMMUNICATIONS	\$ -	\$ 941.38	\$ 672.60	\$ 600.00	\$ 1,000.00	\$ 1,000.00
231	52190 PROFESSIONAL SERVICES	\$ -	\$ -	\$ -	\$ -	\$ -	\$ -
232	55023 SPRINKLER HEADS	\$ -	\$ -	\$ -	\$ 500.00	\$ -	\$ -
233	55130 PHONE SYSTEM	\$ -	\$ -	\$ -	\$ -	\$ -	\$ -
234	57090 CLOTH/UNIFORM ALLOWANCE	\$ 700.00	\$ 700.00	\$ 670.00	\$ 700.00	\$ 700.00	\$ 700.00
235	58302 CITY HALL NEW BOILER	\$ -	\$ -	\$ -	\$ -	\$ -	\$ -
236	58303 BOILER #2 REPLACEMENT	\$ -	\$ -	\$ -	\$ -	\$ -	\$ -
237	58304 ANNEX BOILER REPLACEMENT	\$ -	\$ -	\$ -	\$ -	\$ -	\$ -
238	58307 OIL TANK REPLACEMENT	\$ -	\$ -	\$ -	\$ -	\$ -	\$ -
239	* TOT/ 11192	\$ 186,452.65	\$ 211,917.96	\$ 181,916.83	\$ 165,159.00	\$ 166,416.00	\$ 166,416.00

240

## 241 11194 CABLE COMMISSION

242	51010 DEPT HEAD SALARY & WAGES	\$ 46,000.24	\$ 47,682.61	\$ 49,120.19	\$ 50,393.00	\$ 50,588.00	\$ 50,588.00
243	51011 ASSISTANT SALARY & WAGES	\$ 35,346.66	\$ 36,141.90	\$ 37,224.58	\$ 38,192.00	\$ 38,340.00	\$ 38,340.00
244	51013 PART TIME PRODUCTION ASST	\$ -	\$ 6,564.00	\$ 9,294.00	\$ 9,984.00	\$ 10,000.00	\$ 10,000.00
245	51023 TEMP SALARY & WAGES	\$ 275.00	\$ 1,331.00	\$ -	\$ -	\$ -	\$ -
246	51460 LONGEVITY	\$ 210.00	\$ 390.00	\$ 70.00	\$ 510.00	\$ 570.00	\$ 570.00
247	52030 REPAIRS & MAINTENANCE	\$ -	\$ 743.43	\$ 2,941.46	\$ 2,500.00	\$ 2,500.00	\$ 2,500.00
248	52050 MINOR EQUIPMENT	\$ 583.19	\$ 1,449.22	\$ 1,934.64	\$ 1,500.00	\$ 1,500.00	\$ 1,500.00
249	52150 COMMUNICATIONS	\$ 4,877.43	\$ 5,232.35	\$ 5,835.56	\$ 6,000.00	\$ 6,550.00	\$ 6,550.00
250	52170 PROFESSIONAL DEV & TRAVEL	\$ -	\$ -	\$ -	\$ 200.00	\$ 200.00	\$ 200.00
251	52190 PROFESSIONAL SERVICES	\$ 4,000.00	\$ -	\$ -	\$ 1,000.00	\$ 1,000.00	\$ 1,000.00
252	52230 OFFICE SUPPLIES	\$ 441.04	\$ 984.11	\$ 555.55	\$ 1,000.00	\$ 1,000.00	\$ 1,000.00
253	52380 INDIRECT COSTS REIMBURSE	\$ -	\$ -	\$ -	\$ 10,410.00	\$ 18,000.00	\$ 18,000.00
254	55123 NEW EQUIPMENT	\$ 9,560.42	\$ 23,446.27	\$ 26,327.52	\$ 16,300.00	\$ 24,100.00	\$ 24,100.00
255	61460 ENC LONGEVITY	\$ 330.00	\$ -	\$ -	\$ -	\$ -	\$ -
256	* TOT/ 11194	\$ 101,623.98	\$ 123,964.89	\$ 133,303.50	\$ 137,989.00	\$ 154,348.00	\$ 154,348.00

257

258

259

260

261

262

263

ORG/ OBJ	DEPARTMENT	2007 EXPENDED	2008 EXPENDED	2009 EXPENDED	2010 BUDGETED	2011 Mayor	2011 Council
264	11199 MAYOR'S UNCLASSIFIED						
265	51000 SCHOOL EXP(BUDGET ONLY)RESERVE	\$ -	\$ -	\$ -	\$ -	\$ -	\$ -
266	51010 SALARY & WAGES - RESERVE	\$ -	\$ -	\$ -	\$ -	\$ -	\$ -
267	51011 PERSONNEL - RESERVE	\$ -	\$ -	\$ -	\$ -	\$ -	\$ -
268	51030 OVERTIME - RESERVE	\$ -	\$ -	\$ -	\$ -	\$ -	\$ -
269	51551 TERMINATION LEAVE - RESERVE	\$ -	\$ -	\$ -	\$ 302,000.00	\$ 210,000.00	\$ 210,000.00
270	52031 CHAIR RESTORATION	\$ -	\$ -	\$ -	\$ -	\$ -	\$ -
271	52110 ENERGY & UTILITIES - RESERVE	\$ -	\$ -	\$ -	\$ -	\$ -	\$ -
272	52112 HOLIDAY LIGHT & DECORAT	\$ -	\$ -	\$ -	\$ -	\$ -	\$ -
273	52113 OLD POL STA-ENERGY&UTILIT	\$ -	\$ -	\$ -	\$ -	\$ -	\$ -
274	52152 TELEPHONE	\$ 63,185.01	\$ 63,609.66	\$ 54,488.80	\$ 55,000.00	\$ 50,000.00	\$ 50,000.00
275	52153 COMM SYSTEM REPLACEMENT	\$ -	\$ -	\$ -	\$ -	\$ -	\$ -
276	52171 MASS MUNICIPAL DUES	\$ 2,335.00	\$ 2,517.00	\$ 2,430.00	\$ 2,500.00	\$ 2,500.00	\$ 2,500.00
277	52191 MEDICAL EXAMS	\$ 5,994.00	\$ 2,463.00	\$ 1,876.00	\$ 5,000.00	\$ 5,000.00	\$ 5,000.00
278	52192 UNCLASSIFIED LABOR LAW	\$ 30,000.00	\$ 15,625.00	\$ -	\$ -	\$ -	\$ -
279	52193 ARBITRATION	\$ 175.00	\$ 200.00	\$ -	\$ 100.00	\$ 100.00	\$ 100.00
280	52194 PRINTING & BINDING	\$ -	\$ -	\$ -	\$ 750.00	\$ 200.00	\$ 200.00
281	52195 BUILDING DEMOLITION	\$ -	\$ -	\$ -	\$ -	\$ -	\$ -
282	52993 SUMMER CELEBRATIONS	\$ -	\$ -	\$ -	\$ -	\$ -	\$ -
283	56501 NORFOLK COUNTY AGRICULTURAL HS	\$ -	\$ -	\$ -	\$ -	\$ -	\$ -
284	56900 MONT REG PLANN COMMISSION	\$ 5,106.71	\$ 5,234.38	\$ 5,365.24	\$ 5,500.00	\$ 5,637.00	\$ 5,637.00
285	56901 COMM ACTION COMMISSION	\$ -	\$ -	\$ -	\$ -	\$ -	\$ -
286	56902 TAXES OTHER TOWNS	\$ 1,584.65	\$ 2,503.47	\$ 1,791.25	\$ 1,800.00	\$ 2,000.00	\$ 2,000.00
287	56906 DOWNTOWN PARTNERSHIP PROG	\$ -	\$ -	\$ -	\$ -	\$ -	\$ -
288	57043 PRIOR YR UNPAID BILL	\$ -	\$ -	\$ -	\$ -	\$ -	\$ -
289	57303 WATER	\$ 13,640.41	\$ 16,936.34	\$ 17,152.12	\$ 15,000.00	\$ 20,000.00	\$ 20,000.00
290	57500 DAMAGES PERS & PROPERTY	\$ 110.00	\$ 6,155.00	\$ 3,750.00	\$ 3,000.00	\$ 3,000.00	\$ 3,000.00
291	58100 BOND - LAND ACQUISITION	\$ -	\$ -	\$ -	\$ -	\$ -	\$ -
292	58254 BOND-REMODEL&BLDG REPAIRS	\$ 10,927.71	\$ 54,999.99	\$ -	\$ -	\$ -	\$ -
293	* TOT, 11199	\$ 133,058.49	\$ 170,243.84	\$ 86,853.41	\$ 390,650.00	\$ 298,437.00	\$ 298,437.00
294							
295							
296							
297							
298							
299							
300							
301							
302							
303							
304							
305							
306							
307							

ORG/ OBJ	DEPARTMENT	2007 EXPENDED	2008 EXPENDED	2009 EXPENDED	2010 BUDGETED	2011 Mayor	2011 Council
308	12210 POLICE						
309	51010 DEPT HEAD SALARY & WAGES	\$ 79,156.22	\$ 82,544.56	\$ 83,319.03	\$ 82,681.00	\$ 83,320.00	\$ 83,320.00
310	51011 OFFICE MANAGER SAL & WGS	\$ -	\$ -	\$ -	\$ -	\$ -	\$ -
311	51012 SENIOR CLERKS SAL & WGS	\$ 61,635.60	\$ 68,063.06	\$ 66,857.85	\$ 65,960.00	\$ 68,064.00	\$ 68,064.00
312	51013 POLICE OFFICERS SAL & WGS	\$ 905,746.23	\$ 942,004.32	\$ 915,646.91	\$ 877,952.00	\$ 939,143.00	\$ 939,143.00
313	51014 POLICE SERGEANTS SAL&WGS	\$ 246,877.80	\$ 255,263.20	\$ 255,067.65	\$ 266,455.00	\$ 268,587.00	\$ 268,587.00
314	51015 COMP PROG/OP SAL & WAGES	\$ 49,154.30	\$ 54,033.47	\$ 55,211.42	\$ 54,789.00	\$ 55,212.00	\$ 55,212.00
315	51016 CUSTODIAN SALARY & WAGES	\$ 34,036.08	\$ 28,460.91	\$ -	\$ -	\$ -	\$ -
316	51017 POL LIEUTENANTS SAL & WGS	\$ 107,640.00	\$ 111,295.62	\$ 111,295.62	\$ 116,084.00	\$ 118,406.00	\$ 118,406.00
317	51018 METER OFFICER SAL & WGS	\$ -	\$ -	\$ -	\$ -	\$ -	\$ -
318	51019 MATRONS SAL & WGS	\$ -	\$ -	\$ -	\$ -	\$ -	\$ -
319	51021 DEPUTY CHIEF SAL & WGS	\$ 64,993.50	\$ 69,260.07	\$ 70,269.03	\$ 69,731.00	\$ 70,270.00	\$ 70,270.00
320	51023 TEMPORARY HELP SAL & WGS	\$ -	\$ -	\$ -	\$ -	\$ -	\$ -
321	51030 OVERTIME	\$ 283,747.91	\$ 274,447.88	\$ 274,787.15	\$ 280,000.00	\$ 280,000.00	\$ 280,000.00
322	51031 MATCH - GRANT	\$ 2,500.00	\$ 5,000.00	\$ -	\$ 5,000.00	\$ 5,000.00	\$ 5,000.00
323	51032 COMPENSATORY TIME	\$ 7,899.15	\$ (521.62)	\$ (8,042.15)	\$ -	\$ -	\$ -
324	51050 HOLIDAY PAY	\$ 147,806.46	\$ 152,954.34	\$ 150,986.43	\$ 135,689.00	\$ 141,883.00	\$ 141,883.00
325	51100 SHIFT DIFFERENTIAL	\$ 102,967.42	\$ 106,559.81	\$ 105,083.08	\$ 110,000.00	\$ 110,000.00	\$ 110,000.00
326	51101 COLLEGE CREDITS	\$ 34,000.00	\$ 61,133.85	\$ 64,159.47	\$ 57,637.00	\$ 58,419.00	\$ 58,419.00
327	51102 WORKING OUT OF GRADE	\$ 1,887.59	\$ 1,301.99	\$ 2,109.29	\$ 3,500.00	\$ 3,500.00	\$ 3,500.00
328	51200 PHYSICAL FITNESS	\$ 1,499.63	\$ 2,998.20	\$ 1,453.57	\$ 3,500.00	\$ 1,000.00	\$ 1,000.00
329	51460 LONGEVITY	\$ 15,330.00	\$ 16,230.00	\$ 14,570.00	\$ 12,910.00	\$ 9,550.00	\$ 9,550.00
330	51551 TERMINATION LEAVE	\$ -	\$ 69.26	\$ 86,370.56	\$ -	\$ -	\$ -
331	52030 REPAIRS & MAINTENANCE	\$ 24,321.11	\$ 25,960.24	\$ 24,616.67	\$ 26,000.00	\$ 27,040.00	\$ 27,040.00
332	52033 PARKING METER MAINTENANCE	\$ -	\$ -	\$ -	\$ -	\$ -	\$ -
333	52050 MINOR EQUIPMENT	\$ 6,509.46	\$ 3,079.84	\$ 11,375.13	\$ 5,200.00	\$ 5,408.00	\$ 5,408.00
334	52110 ENERGY & UTILITIES	\$ 27,977.61	\$ 29,092.04	\$ 31,544.27	\$ 38,500.00	\$ 32,000.00	\$ 32,000.00
335	52150 COMMUNICATIONS	\$ 13,601.75	\$ 15,014.24	\$ 13,674.39	\$ 16,800.00	\$ 16,800.00	\$ 16,800.00
336	52170 PROFESSIONAL DEV & TRAVEL	\$ 6,034.10	\$ 2,778.58	\$ 4,330.83	\$ 4,560.00	\$ 4,742.00	\$ 4,742.00
337	52171 CRIMINAL JUSTICE POL TRAINING	\$ -	\$ -	\$ -	\$ -	\$ -	\$ -
338	52190 PROFESSIONAL SERVICES	\$ 45,278.28	\$ 46,404.37	\$ 32,364.46	\$ 60,000.00	\$ 55,000.00	\$ 55,000.00
339	52230 OFFICE SUPPLIES	\$ 10,265.34	\$ 7,339.90	\$ 8,146.36	\$ 9,400.00	\$ 9,400.00	\$ 9,400.00
340	55011 AIR CONDITIONING REPLACEMENT	\$ -	\$ -	\$ -	\$ -	\$ -	\$ -
341	55012 DOMESTIC VIOLENCE SUPPORT	\$ 15,825.40	\$ 14,096.06	\$ 14,509.99	\$ -	\$ -	\$ -
342	55060 ARMORY EQUIPMENT	\$ 5,842.17	\$ 5,291.95	\$ 3,606.52	\$ 6,000.00	\$ 6,000.00	\$ 6,000.00
343	55070 CAMERA EQUIPMENT	\$ -	\$ -	\$ -	\$ -	\$ -	\$ -
344	55080 PORTABLE RADIOS	\$ 3,879.00	\$ 3,500.00	\$ 109.35	\$ 4,000.00	\$ 4,000.00	\$ 4,000.00
345	55090 NEW POLICE VEHICLES	\$ -	\$ -	\$ 57,958.00	\$ -	\$ 58,000.00	\$ 58,000.00
346	55114 BULLET PROOF VESTS	\$ -	\$ -	\$ -	\$ -	\$ -	\$ -
347	57200 CLEANING CONTRACT	\$ -	\$ -	\$ 14,740.00	\$ 18,734.00	\$ 19,483.00	\$ 19,483.00
348	55145 RADIO SYSTEM UPGRADE	\$ 1,774.50	\$ 2,426.75	\$ 1,145.30	\$ 7,800.00	\$ 7,800.00	\$ 7,800.00
349	57090 CLOTH/UNIFORM ALLOWANCE	\$ 35,531.71	\$ 34,434.31	\$ 33,202.60	\$ 31,107.00	\$ 31,107.00	\$ 31,107.00
350	57800 BUILDING REPAIRS	\$ -	\$ 3,225.57	\$ 125.00	\$ 5,000.00	\$ 5,000.00	\$ 5,000.00
351	* TOT/ 12210	\$ 2,343,718.32	\$ 2,423,742.77	\$ 2,500,593.78	\$ 2,374,989.00	\$ 2,494,134.00	\$ 2,494,134.00

ORG/ OBJ	DEPARTMENT	2007 EXPENDED	2008 EXPENDED	2009 EXPENDED	2010 BUDGETED	2011 Mayor	2011 Council
352	12220 FIRE						
353	51010 DEPT HEAD SALARY & WAGES	\$ 71,644.56	\$ 76,216.75	\$ 77,296.21	\$ 76,704.00	\$ 77,297.00	\$ 77,297.00
354	51011 CAPTAINS SALARY & WAGES	\$ 56,489.68	\$ 58,445.92	\$ 58,445.92	\$ 58,169.00	\$ 63,173.00	\$ 63,173.00
355	51012 SENIOR CLERK SAL & WAGES	\$ 30,817.80	\$ 31,864.45	\$ 31,300.26	\$ 30,881.00	\$ 31,865.00	\$ 31,865.00
356	51013 PRIVATES SALARY & WAGES	\$ 942,123.38	\$ 999,184.85	\$ 932,146.23	\$ 946,455.00	\$ 965,918.00	\$ 965,918.00
357	51014 SUPT FIRE ALARM SAL & WGS	\$ -	\$ -	\$ -	\$ -	\$ -	\$ -
358	51015 SIGNAL MAINTENANCE SAL&WG	\$ -	\$ -	\$ -	\$ -	\$ -	\$ -
359	51016 LIEUTENANTS SALARY&WAGES	\$ 319,776.76	\$ 328,854.38	\$ 341,234.77	\$ 321,891.00	\$ 340,862.00	\$ 340,862.00
360	51020 CALL FIREFIGHTERS SAL&WGS	\$ -	\$ -	\$ -	\$ -	\$ -	\$ -
361	51024 MECHANIC SALARY & WAGES	\$ -	\$ -	\$ -	\$ -	\$ -	\$ -
362	51030 OVERTIME	\$ 167,270.07	\$ 154,627.72	\$ 164,790.78	\$ 129,000.00	\$ 129,000.00	\$ 129,000.00
363	51050 HOLIDAY PAY	\$ 141,366.76	\$ 148,482.35	\$ 142,298.30	\$ 142,405.00	\$ 150,451.00	\$ 150,451.00
364	51101 COLLEGE CREDITS	\$ 25,540.00	\$ 23,840.00	\$ 23,260.00	\$ 23,380.00	\$ 23,380.00	\$ 23,380.00
365	51102 COLLATERAL JOBS	\$ 40,311.36	\$ 42,274.52	\$ 41,295.61	\$ 40,000.00	\$ 40,000.00	\$ 40,000.00
366	51103 EDUCATIONAL INCENTIVE	\$ 15,312.84	\$ 3,081.78	\$ 307.06	\$ 4,000.00	\$ 4,000.00	\$ 4,000.00
367	51104 EMT RATING	\$ 19,065.02	\$ 18,939.69	\$ 19,208.36	\$ 22,757.00	\$ 23,069.00	\$ 23,069.00
368	51105 SICK LEAVE INCENTIVE	\$ 2,700.79	\$ 2,822.30	\$ 1,221.26	\$ 3,000.00	\$ 3,000.00	\$ 3,000.00
369	51200 PHYSICAL FITNESS	\$ 5,600.00	\$ 7,200.00	\$ 6,000.00	\$ 7,200.00	\$ 7,200.00	\$ 7,200.00
370	51460 LONGEVITY	\$ 16,230.00	\$ 17,010.00	\$ 16,720.00	\$ 18,100.00	\$ 1,800.00	\$ 1,800.00
371	51551 TERMINATION LEAVE	\$ 68,907.17	\$ 59,806.36	\$ -	\$ -	\$ -	\$ -
372	52030 REPAIRS & MAINTENANCE	\$ 62,887.26	\$ 64,300.42	\$ 50,589.88	\$ 70,000.00	\$ 60,000.00	\$ 60,000.00
373	52050 MINOR EQUIPMENT	\$ 12,255.38	\$ 6,270.43	\$ 12,568.80	\$ 12,500.00	\$ 10,000.00	\$ 10,000.00
374	52110 ENERGY & UTILITIES	\$ 32,724.65	\$ 41,929.44	\$ 43,704.71	\$ 41,000.00	\$ 31,000.00	\$ 31,000.00
375	52150 COMMUNICATIONS	\$ 2,362.55	\$ 2,583.71	\$ 2,980.72	\$ 3,000.00	\$ 3,000.00	\$ 3,000.00
376	52170 PROFESSIONAL DEV & TRAVEL	\$ 11,735.61	\$ 3,961.73	\$ 12,011.31	\$ 5,500.00	\$ 5,500.00	\$ 5,500.00
377	52190 PROFESSIONAL SERVICES	\$ 1,553.11	\$ 1,311.26	\$ -	\$ 2,000.00	\$ 2,000.00	\$ 2,000.00
378	52230 OFFICE SUPPLIES	\$ 5,389.57	\$ 3,990.23	\$ 3,807.79	\$ 4,400.00	\$ 4,400.00	\$ 4,400.00
379	52238 FIRE PREVENT/TRAINING SUPPLIES	\$ 5,000.00	\$ 1,993.65	\$ 367.56	\$ 2,200.00	\$ 2,200.00	\$ 2,200.00
380	52995 PHYSICAL FITNESS	\$ -	\$ -	\$ -	\$ -	\$ -	\$ -
381	55090 NEW FIRE VEHICLES	\$ -	\$ -	\$ -	\$ -	\$ -	\$ -
382	55107 STATION 1 OVERHEAD DOORS	\$ -	\$ -	\$ -	\$ -	\$ -	\$ -
383	55108 STATION 1 RETAINING WALL	\$ -	\$ -	\$ -	\$ -	\$ -	\$ -
384	55109 STATION 1 ROOF REPAIRS	\$ -	\$ -	\$ -	\$ -	\$ -	\$ -
385	55114 PROTECTIVE FF CLOTHING	\$ 5,321.45	\$ 3,351.98	\$ 1,541.00	\$ 2,500.00	\$ 12,500.00	\$ 12,500.00
386	55115 UPGRADE COMPUTER SYSTEM	\$ -	\$ -	\$ -	\$ -	\$ -	\$ -
387	55130 PHONE SYSTEM	\$ -	\$ -	\$ -	\$ -	\$ -	\$ -
388	55134 STATION 3 ROOF REPAIR	\$ -	\$ -	\$ -	\$ -	\$ -	\$ -
389	55135 COMPUTER LIC & SUPPORT	\$ 5,287.00	\$ 5,734.00	\$ 5,680.00	\$ 6,000.00	\$ 6,000.00	\$ 6,000.00
390	55146 STUDENT AWARE OF FIRE EDU	\$ -	\$ -	\$ -	\$ -	\$ -	\$ -
391	55193 LIFE PACK 500 DEFIBRILLATOR	\$ -	\$ -	\$ -	\$ -	\$ -	\$ -
392	55204 REPLACE SCBA SYSTEM	\$ -	\$ 1,075.00	\$ -	\$ -	\$ -	\$ -
393	57090 CLOTH/UNIFORM ALLOWANCE	\$ 28,600.00	\$ 27,400.00	\$ 24,800.00	\$ 24,800.00	\$ 26,000.00	\$ 26,000.00
394	57800 BUILDING REPAIRS	\$ -	\$ -	\$ -	\$ -	\$ -	\$ -
395	* TOT/ 12220	\$ 2,096,272.77	\$ 2,136,552.92	\$ 2,013,576.53	\$ 1,997,842.00	\$ 2,023,615.00	\$ 2,023,615.00

ORG/ OBJ	DEPARTMENT	2007 EXPENDED	2008 EXPENDED	2009 EXPENDED	2010 BUDGETED	2011 Mayor	2011 Council
396	12231 AMBULANCE						
397	52190 PROFESSIONAL SERVICES	\$ -	\$ -	\$ -	\$ -	\$ -	\$ -
398	* TOT/ 12231	\$ -	\$ -	\$ -	\$ -	\$ -	\$ -
399							
400	12240 DISPATCHERS						
401	51013 FULL TIME DISPATCHERS SAL	\$ 147,102.48	\$ 155,869.20	\$ 113,918.15	\$ 115,870.00	\$ 155,870.00	\$ 155,870.00
402	51022 PART TIME DISPATCHERS SAL	\$ 21,712.22	\$ 20,436.64	\$ 11,960.36	\$ 20,000.00	\$ 20,000.00	\$ 20,000.00
403	51030 OVERTIME	\$ 21,556.72	\$ 16,512.01	\$ 12,382.09	\$ 20,000.00	\$ 20,000.00	\$ 20,000.00
404	51032 COMPENSATORY TIME	\$ 869.58	\$ 623.75	\$ 1,483.18	\$ -	\$ -	\$ -
405	51050 HOLIDAY PAY	\$ 11,305.46	\$ 11,560.04	\$ 10,690.94	\$ 13,000.00	\$ 13,000.00	\$ 13,000.00
406	51100 SHIFT DIFFERENTIAL	\$ 10,736.34	\$ 11,061.25	\$ 11,361.10	\$ 11,000.00	\$ 11,000.00	\$ 11,000.00
407	51200 PHYSICAL FITNESS	\$ -	\$ -	\$ -	\$ 200.00	\$ 200.00	\$ 200.00
408	51460 LONGEVITY	\$ 405.00	\$ 300.00	\$ 495.00	\$ 720.00	\$ 1,125.00	\$ 1,125.00
409	51551 TERMINATION LEAVE	\$ 1,506.96	\$ -	\$ -	\$ -	\$ -	\$ -
410	52150 COMMUNICATIONS	\$ -	\$ -	\$ -	\$ -	\$ -	\$ -
411	52170 PROFESSIONAL DEV & TRAVEL	\$ -	\$ -	\$ -	\$ -	\$ -	\$ -
412	52230 OFFICE SUPPLIES	\$ -	\$ -	\$ -	\$ -	\$ -	\$ -
413	57090 CLOTH/UNIFORM ALLOWANCE	\$ 2,825.00	\$ 2,875.00	\$ 2,900.00	\$ 3,000.00	\$ 3,000.00	\$ 3,000.00
414	* TOT/ 12240	\$ 218,019.76	\$ 219,237.89	\$ 165,190.82	\$ 183,790.00	\$ 224,195.00	\$ 224,195.00
415							
416	12241 BUILDING INSPECTOR						
417	51010 DEPT HEAD SALARY & WAGES	\$ 58,696.82	\$ 67,991.20	\$ 70,269.03	\$ 69,731.00	\$ 70,270.00	\$ 70,270.00
418	51011 ASST BLDG INSP SAL & WGS	\$ 43,506.06	\$ 50,488.09	\$ -	\$ -	\$ 50,000.00	\$ 50,000.00
419	51012 CLERK/ASST SAL & WAGES	\$ 30,817.80	\$ 35,130.60	\$ 34,508.50	\$ 34,045.00	\$ 35,131.00	\$ 35,131.00
420	51013 P/T CLERK/ASST SAL & WGS	\$ 21,523.51	\$ 25,539.13	\$ 17,471.39	\$ 17,225.00	\$ 17,225.00	\$ 17,225.00
421	51023 ALT BUILDING INSPECTOR	\$ -	\$ -	\$ 108.00	\$ 4,000.00	\$ 4,000.00	\$ 4,000.00
422	51030 OVERTIME	\$ -	\$ -	\$ 61.87	\$ 100.00	\$ 100.00	\$ 100.00
423	51460 LONGEVITY	\$ 930.00	\$ 1,140.00	\$ 850.00	\$ 1,110.00	\$ 1,245.00	\$ 1,245.00
424	51551 TERMINATION LEAVE	\$ -	\$ -	\$ 800.00	\$ -	\$ -	\$ -
425	52020 BUILDING MAINTENANCE	\$ 9,925.00	\$ 96.65	\$ 8,074.70	\$ 1,058.00	\$ 1,100.00	\$ 1,100.00
426	52030 REPAIRS & MAINTENANCE	\$ 1,999.64	\$ 753.55	\$ 116.50	\$ 2,500.00	\$ 2,500.00	\$ 2,500.00
427	52050 MINOR EQUIPMENT	\$ 130.90	\$ 287.95	\$ 195.50	\$ 500.00	\$ 500.00	\$ 500.00
428	52150 COMMUNICATIONS	\$ 1,381.38	\$ 1,531.88	\$ 1,356.00	\$ 1,500.00	\$ 1,500.00	\$ 1,500.00
429	52170 PROFESSIONAL DEV & TRAVEL	\$ 1,159.31	\$ 1,118.63	\$ 992.76	\$ 1,500.00	\$ 1,500.00	\$ 1,500.00
430	52190 PROFESSIONAL SERVICES	\$ 393.34	\$ 131.00	\$ 55.40	\$ 200.00	\$ 200.00	\$ 200.00
431	52230 OFFICE SUPPLIES	\$ 1,011.64	\$ 802.15	\$ 467.54	\$ 1,200.00	\$ 1,200.00	\$ 1,200.00
432	52240 VEHICLE SUPPLIES	\$ 378.07	\$ 352.39	\$ 1,453.39	\$ 1,000.00	\$ 1,000.00	\$ 1,000.00
433	52280 COPIER EXPENSES	\$ -	\$ -	\$ -	\$ 150.00	\$ 150.00	\$ 150.00
434	55102 PERSONAL COMPUTER & PRINT	\$ -	\$ -	\$ -	\$ -	\$ -	\$ -
435	57043 PRIOR YR EARTH TECH REIMBRMNT	\$ -	\$ -	\$ -	\$ -	\$ -	\$ -
436	57090 CLOTH/UNIFORM ALLOWANCE	\$ 700.00	\$ 700.00	\$ 350.00	\$ 350.00	\$ 700.00	\$ 700.00
437	* TOT/ 12241	\$ 172,553.47	\$ 186,063.22	\$ 137,130.58	\$ 136,169.00	\$ 188,321.00	\$ 188,321.00
438							
439							

ORG/ OBJ	DEPARTMENT	2007 EXPENDED	2008 EXPENDED	2009 EXPENDED	2010 BUDGETED	2011 Mayor	2011 Council
440	12243 PLUMBING & GAS INSPECTOR						
441	51010 PLUMBING & GAS INSP SALARY & W	\$ 20,906.50	\$ 30,816.54	\$ 24,748.70	\$ 23,835.00	\$ 24,019.00	\$ 24,019.00
442	51023 ALTERNATE PLUMBING INSPECTOR	\$ 5,533.78	\$ -	\$ 401.45	\$ 3,000.00	\$ 3,000.00	\$ 3,000.00
443	51460 LONGEVITY	\$ 210.00	\$ -	\$ -	\$ -	\$ -	\$ -
444	51551 TERMINATION LEAVE	\$ 7,169.54	\$ -	\$ -	\$ -	\$ -	\$ -
445	52030 REPAIRS & MAINTENANCE	\$ -	\$ -	\$ -	\$ -	\$ -	\$ -
446	52050 MINOR EQUIPMENT	\$ -	\$ -	\$ -	\$ 100.00	\$ 100.00	\$ 100.00
447	52170 PROFESSIONAL DEV & TRAVEL	\$ 1,416.07	\$ 1,511.12	\$ 311.75	\$ 1,000.00	\$ 1,000.00	\$ 1,000.00
448	52230 OFFICE SUPPLIES	\$ 90.43	\$ -	\$ -	\$ -	\$ -	\$ -
449	55102 PERSONAL COMPUTER & PRINT	\$ -	\$ -	\$ -	\$ -	\$ -	\$ -
450	57090 CLOTH/UNIFORM ALLOWANCE	\$ 247.92	\$ 350.00	\$ 350.00	\$ 350.00	\$ 350.00	\$ 350.00
451	* TOT/ 12243	\$ 35,574.24	\$ 32,677.66	\$ 25,811.90	\$ 28,285.00	\$ 28,469.00	\$ 28,469.00
452							
453	12244 WEIGHTS & MEASURES						
454	51010 DEPT HEAD SALARY & WAGES	\$ 7,817.16	\$ 8,082.65	\$ 8,082.65	\$ 8,021.00	\$ 8,083.00	\$ 8,083.00
455	52050 MINOR EQUIPMENT	\$ -	\$ -	\$ -	\$ -	\$ -	\$ -
456	52170 PROFESSIONAL DEV & TRAVEL	\$ -	\$ -	\$ -	\$ -	\$ -	\$ -
457	52230 OFFICE SUPPLIES	\$ 216.68	\$ -	\$ 236.00	\$ 200.00	\$ 200.00	\$ 200.00
458	* TOT/ 12244	\$ 8,033.84	\$ 8,082.65	\$ 8,318.65	\$ 8,221.00	\$ 8,283.00	\$ 8,283.00
459							
460	12245 WIRE INSPECTOR/FIRE ALARM						
461	51010 WIRE INSPECTOR SALARY & WAGES	\$ 46,098.00	\$ 47,663.82	\$ 46,819.88	\$ 43,842.00	\$ 47,664.00	\$ 47,664.00
462	51023 TEMP INSPECTOR SALARY & WAGES	\$ 2,540.00	\$ 1,460.00	\$ 1,800.00	\$ 2,500.00	\$ 2,500.00	\$ 2,500.00
463	52030 REPAIRS & MAINTENANCE	\$ 469.48	\$ 1,173.06	\$ 4,239.98	\$ 7,000.00	\$ 7,000.00	\$ 7,000.00
464	52032 TRAFFIC MAINTENANCE	\$ -	\$ -	\$ -	\$ -	\$ -	\$ -
465	52050 MINOR EQUIPMENT	\$ 1,212.87	\$ 579.06	\$ -	\$ 750.00	\$ 750.00	\$ 750.00
466	52110 ENERGY & UTILITIES	\$ 4,988.05	\$ 5,230.10	\$ 4,846.13	\$ 5,500.00	\$ 5,500.00	\$ 5,500.00
467	52150 COMMUNICATIONS	\$ -	\$ -	\$ -	\$ -	\$ -	\$ -
468	52170 PROFESSIONAL DEV & TRAVEL	\$ 478.55	\$ 447.55	\$ 86.59	\$ 500.00	\$ 500.00	\$ 500.00
469	52230 OFFICE SUPPLIES	\$ -	\$ -	\$ -	\$ -	\$ -	\$ -
470	52240 VEHICLE SUPPLIES	\$ -	\$ -	\$ -	\$ -	\$ -	\$ -
471	55120 LONGEVITY	\$ -	\$ -	\$ 150.00	\$ 180.00	\$ 210.00	\$ 210.00
472	55147 FIBER OPTIC TRAFFIC LIGHT	\$ -	\$ -	\$ -	\$ -	\$ -	\$ -
473	57090 CLOTH/UNIFORM ALLOWANCE	\$ 350.00	\$ 350.00	\$ 350.00	\$ 350.00	\$ 350.00	\$ 350.00
474	* TOT/ 12245	\$ 56,136.95	\$ 56,903.59	\$ 58,292.58	\$ 60,622.00	\$ 64,474.00	\$ 64,474.00
475	12290 ANIMAL CONTROL OFFICER						
476	51010 ANIMAL CONTROL OFFICER SALARY	\$ 31,477.42	\$ 34,424.76	\$ 35,134.77	\$ 34,866.00	\$ 35,135.00	\$ 35,135.00
477	51023 ALT ANIMAL CONTROL OFFICER	\$ 931.00	\$ 3,754.89	\$ -	\$ 1,000.00	\$ 1,000.00	\$ 1,000.00
478	51030 OVERTIME	\$ 147.67	\$ 2,374.50	\$ 228.53	\$ 500.00	\$ 500.00	\$ 500.00
479	51460 LONGEVITY	\$ 180.00	\$ 210.00	\$ 40.00	\$ 270.00	\$ 300.00	\$ 300.00
480	51551 TERMINATION LEAVE	\$ 509.08	\$ 509.28	\$ -	\$ -	\$ -	\$ -
481	57090 CLOTH/UNIFORM ALLOWANCE	\$ 568.75	\$ 700.00	\$ 350.00	\$ 350.00	\$ 350.00	\$ 350.00
482	52030 REPAIRS & MAINTENANCE	\$ -	\$ -	\$ -	\$ 1,000.00	\$ 1,000.00	\$ 1,000.00
483	* TOT/ 12290	\$ 33,813.92	\$ 41,973.43	\$ 35,753.30	\$ 37,986.00	\$ 38,285.00	\$ 38,285.00

ORG/ OBJ	DEPARTMENT	2007 EXPENDED	2008 EXPENDED	2009 EXPENDED	2010 BUDGETED	2011 Mayor	2011 Council
484							
485							
486	12291 CIVIL DEFENSE						
487	51010 DEPT HEAD SALARY & WAGES	\$ 5,848.68	\$ 7,905.36	\$ 7,905.36	\$ 5,406.00	\$ 7,906.00	\$ 7,906.00
488	52050 MINOR EQUIPMENT	\$ 1,229.11	\$ 1,240.87	\$ 73.04	\$ 1,000.00	\$ 700.00	\$ 700.00
489	52170 PROFESSIONAL DEV & TRAVEL	\$ 1,263.89	\$ 196.59	\$ 818.78	\$ -	\$ 700.00	\$ 700.00
490	52230 OFFICE SUPPLIES	\$ 5.69	\$ 168.13	\$ -	\$ -	\$ 100.00	\$ 100.00
491	52996 EMERGENCY FUND	\$ 34.51	\$ 555.65	\$ -	\$ -	\$ 500.00	\$ 500.00
492	55148 EMERGENCY PLAN	\$ -	\$ -	\$ -	\$ -	\$ -	\$ -
493	* TOT/ 12291	\$ 8,381.88	\$ 10,066.60	\$ 8,797.18	\$ 6,406.00	\$ 9,906.00	\$ 9,906.00
494							
495	12292 ANIMAL SHELTER						
496	51023 SHELTER ATTENDANTS	\$ 20,536.29	\$ 12,350.04	\$ 12,882.00	\$ 19,154.00	\$ 18,845.00	\$ 18,845.00
497	52030 REPAIRS & MAINTENANCE	\$ 4,206.75	\$ 3,407.33	\$ 1,717.14	\$ 3,000.00	\$ 3,000.00	\$ 3,000.00
498	52050 MINOR EQUIPMENT	\$ 2,286.59	\$ 1,542.28	\$ 690.20	\$ 500.00	\$ 500.00	\$ 500.00
499	52110 ENERGY & UTILITIES	\$ 5,904.15	\$ 6,031.54	\$ 6,926.52	\$ 7,000.00	\$ 7,000.00	\$ 7,000.00
500	52150 COMMUNICATIONS	\$ 1,046.73	\$ -	\$ -	\$ 500.00	\$ 500.00	\$ 500.00
501	52170 PROFESSIONAL DEV & TRAVEL	\$ 495.00	\$ -	\$ -	\$ -	\$ -	\$ -
502	52190 PROFESSIONAL SERVICES	\$ 327.00	\$ 164.00	\$ -	\$ 500.00	\$ 500.00	\$ 500.00
503	52230 OFFICE SUPPLIES	\$ 445.21	\$ 422.03	\$ 436.64	\$ 500.00	\$ 500.00	\$ 500.00
504	52997 ANIMAL CARE & DISPOSAL	\$ 10,967.82	\$ 11,114.49	\$ 7,520.45	\$ 12,000.00	\$ 15,000.00	\$ 15,000.00
505	55207 NEW ANIMAL SHELTER	\$ 52.00	\$ -	\$ -	\$ -	\$ -	\$ -
506	* TOT/ 12292	\$ 46,267.54	\$ 35,031.71	\$ 30,172.95	\$ 43,154.00	\$ 45,845.00	\$ 45,845.00
507							
508	12293 CIVIL ENFORCEMENT						
509	51010 DEPT HEAD SALARY & WAGES	\$ 2,291.66	\$ 2,499.96	\$ 2,499.96	\$ 2,500.00	\$ 2,500.00	\$ 2,500.00
510	51012 CLERK/ASST SAL & WAGES	\$ -	\$ -	\$ 385.98	\$ -	\$ -	\$ -
511	51023 TEMP SALARY & WAGES	\$ -	\$ -	\$ -	\$ -	\$ -	\$ -
512	51030 OVERTIME	\$ -	\$ -	\$ -	\$ -	\$ -	\$ -
513	51460 LONGEVITY	\$ -	\$ -	\$ -	\$ -	\$ -	\$ -
514	51551 TERMINATION LEAVE	\$ -	\$ -	\$ -	\$ -	\$ -	\$ -
515	52190 PROFESSIONAL SERVICES	\$ 3,400.49	\$ 9,055.00	\$ 8,955.00	\$ 10,000.00	\$ 10,000.00	\$ 10,000.00
516	52230 OFFICE SUPPLIES	\$ 715.57	\$ 112.99	\$ 499.37	\$ 500.00	\$ 500.00	\$ 500.00
517	* TOT/ 12293	\$ 6,407.72	\$ 11,667.95	\$ 12,340.31	\$ 13,000.00	\$ 13,000.00	\$ 13,000.00
518							
519	12294 FORESTRY						
520	52030 REPAIRS & MAINTENANCE	\$ 3,031.40	\$ 3,659.93	\$ 1,897.65	\$ 3,500.00	\$ 3,500.00	\$ 3,500.00
521	52050 MINOR EQUIPMENT	\$ 1,115.91	\$ 1,325.09	\$ -	\$ 2,100.00	\$ 2,100.00	\$ 2,100.00
522	52150 COMMUNICATIONS	\$ -	\$ -	\$ -	\$ 200.00	\$ 200.00	\$ 200.00
523	52170 PROFESSIONAL DEV & TRAVEL	\$ 60.00	\$ 137.35	\$ 120.00	\$ 100.00	\$ 100.00	\$ 100.00
524	52190 PROFESSIONAL SERVICES	\$ 600.00	\$ 1,204.99	\$ -	\$ 2,500.00	\$ 2,500.00	\$ 2,500.00
525	52230 SUPPLIES	\$ 999.98	\$ 583.58	\$ 92.97	\$ 1,000.00	\$ 1,000.00	\$ 1,000.00
526	57090 CLOTH/UNIFORM ALLOWANCE	\$ 1,000.00	\$ 1,200.00	\$ 1,200.00	\$ -	\$ -	\$ -
527	* TOT/ 12294	\$ 6,807.29	\$ 8,110.94	\$ 3,310.62	\$ 9,400.00	\$ 9,400.00	\$ 9,400.00

ORG/ OBJ	DEPARTMENT	2007 EXPENDED	2008 EXPENDED	2009 EXPENDED	2010 BUDGETED	2011 Mayor	2011 Council
528							
529	13999 REGIONAL SCHOOL ASSESSMENTS						
530	56500 MONT VOC TEC SCH ASSESS	\$ 564,373.01	\$ 598,963.00	\$ 674,258.00	\$ 683,780.00	\$ 699,447.00	\$ 699,447.00
531	* TOT, 13999	\$ 564,373.01	\$ 598,963.00	\$ 674,258.00	\$ 683,780.00	\$ 699,447.00	\$ 699,447.00
532							
533	14410 SURVEY						
534	51010 DEPT HEAD SALARY & WAGES	\$ 79,181.45	\$ 79,335.13	\$ 52,400.97	\$ 43,333.00	\$ 43,668.00	\$ 43,668.00
535	51011 ASSISTANT SALARY & WAGES	\$ 30,350.09	\$ 31,864.45	\$ 31,356.36	\$ 30,881.00	\$ 31,865.00	\$ 31,865.00
536	51013 GIS / AUTOCAD TECHNICIAN	\$ 42,436.16	\$ 45,172.84	\$ 45,140.70	\$ 44,827.00	\$ 45,173.00	\$ 45,173.00
537	51020 ENGINEERS SALARY & WAGES	\$ 42,336.27	\$ 44,594.46	\$ 43,804.79	\$ 22,708.00	\$ 22,298.00	\$ 22,298.00
538	51023 TEMP CLERK SALARY & WAGES	\$ 566.23	\$ -	\$ -	\$ -		
539	51030 OVERTIME	\$ 810.72	\$ -	\$ 1,475.19	\$ 1,000.00	\$ 1,000.00	\$ 1,000.00
540	51460 LONGEVITY	\$ 1,470.00	\$ 1,590.00	\$ 1,480.00	\$ 1,770.00	\$ 780.00	\$ 780.00
541	52030 REPAIRS & MAINTENANCE	\$ 1,107.65	\$ 445.30	\$ 648.98	\$ 750.00	\$ 750.00	\$ 750.00
542	52050 MINOR EQUIPMENT	\$ 18,184.99	\$ 2,106.33	\$ -	\$ -	\$ 6,500.00	\$ 6,500.00
543	52150 COMMUNICATIONS	\$ 637.06	\$ 469.44	\$ 478.53	\$ 1,000.00	\$ 1,000.00	\$ 1,000.00
544	52170 PROFESSIONAL DEV & TRAVEL	\$ 816.46	\$ 60.00	\$ 671.75	\$ 1,250.00	\$ 750.00	\$ 750.00
545	52190 PROFESSIONAL SERVICES	\$ 21,215.00	\$ 11,606.38	\$ 5,944.53	\$ 12,140.00	\$ 15,000.00	\$ 15,000.00
546	52230 OFFICE SUPPLIES	\$ 2,404.71	\$ 2,348.56	\$ 1,456.36	\$ 4,000.00	\$ 4,000.00	\$ 4,000.00
547	52240 VEHICLE SUPPLIES	\$ 331.89	\$ 39.00	\$ 998.38	\$ 500.00	\$ 500.00	\$ 500.00
548	57090 CLOTH/UNIFORM ALLOWANCE	\$ 350.00	\$ 350.00	\$ 350.00	\$ 350.00	\$ 350.00	\$ 350.00
549	* TOT, 14410	\$ 242,198.68	\$ 219,981.89	\$ 186,206.54	\$ 164,509.00	\$ 173,634.00	\$ 173,634.00
550							
551							
552							
553							
554							
555							
556							
557							
558							
559							
560							
561							
562							
563							
564							
565							
566							
567							
568							
569							
570							
571							

ORG/ OBJ	DEPARTMENT	2007 EXPENDED	2008 EXPENDED	2009 EXPENDED	2010 BUDGETED	2011 Mayor	2011 Council
572	14420 HIGHWAY						
573	52030 REPAIRS & MAINTENANCE	\$ 74,583.24	\$ 60,368.62	\$ 76,662.93	\$ 70,000.00	\$ 75,000.00	\$ 75,000.00
574	52032 TRAFFIC MAINTENANCE	\$ 15,191.15	\$ 7,596.51	\$ 7,944.07	\$ 40,000.00	\$ 40,000.00	\$ 40,000.00
575	52033 PARKING MAINTENANCE	\$ 20,224.48	\$ 20,550.92	\$ 26,271.88	\$ 10,000.00	\$ 20,000.00	\$ 20,000.00
576	52034 CRUSHER MAINTENANCE	\$ 4,331.40	\$ 5,950.00	\$ 912.00	\$ 2,000.00	\$ 2,000.00	\$ 2,000.00
577	52038 UNACCEPTED ROAD MAINTENAN	\$ 13.49	\$ -	\$ -	\$ 100.00	\$ -	\$ -
578	52050 MINOR EQUIPMENT	\$ 11,407.41	\$ 3,896.94	\$ 3,651.94	\$ 10,000.00	\$ 10,000.00	\$ 10,000.00
579	52070 EQUIPMENT RENTAL	\$ 2,700.00	\$ 900.00	\$ -	\$ 1,000.00	\$ 1,000.00	\$ 1,000.00
580	52110 ENERGY & UTILITIES	\$ 48.08	\$ 48.01	\$ 48.21	\$ 100.00	\$ 100.00	\$ 100.00
581	52120 STREET LIGHTING	\$ 116,241.14	\$ 124,050.50	\$ 130,340.40	\$ 136,500.00	\$ 137,000.00	\$ 137,000.00
582	52150 COMMUNICATIONS	\$ 3,170.18	\$ 4,145.22	\$ 3,056.41	\$ 3,000.00	\$ 3,500.00	\$ 3,500.00
583	52170 PROFESSIONAL DEV & TRAVEL	\$ 460.00	\$ 790.00	\$ 400.00	\$ 1,000.00	\$ 1,000.00	\$ 1,000.00
584	52190 PROFESSIONAL SERVICES	\$ 1,081.09	\$ 1,030.67	\$ 757.68	\$ 1,000.00	\$ 1,000.00	\$ 1,000.00
585	52210 SNOW & ICE	\$ 323,044.17	\$ 624,090.01	\$ 583,821.91	\$ 175,000.00	\$ 225,000.00	\$ 225,000.00
586	52230 OFFICE SUPPLIES	\$ 559.52	\$ 1,145.28	\$ 425.70	\$ 1,000.00	\$ 1,000.00	\$ 1,000.00
587	52240 VEHICLE SUPPLIES	\$ 4,531.10	\$ 9,289.04	\$ 13,429.87	\$ 7,000.00	\$ 10,000.00	\$ 10,000.00
588	52241 CRACK SEALING STREETS	\$ -	\$ -	\$ -	\$ -	\$ -	\$ -
589	52242 COLD PATCH	\$ 9,063.00	\$ 20,654.65	\$ 16,593.47	\$ 15,000.00	\$ -	\$ -
590	5E+05 ROAD MAINTENANCE	\$ -	\$ -	\$ -	\$ -	\$ 67,000.00	\$ 67,000.00
591	52997 DRAIN ACCOUNT	\$ 43,753.25	\$ 31,260.33	\$ 35,120.77	\$ 50,000.00	\$ -	\$ -
592	52998 BERM ACCOUNT	\$ -	\$ 1,000.00	\$ -	\$ 1,000.00	\$ -	\$ -
593	55123 NEW EQUIPMENT	\$ -	\$ -	\$ -	\$ -	\$ -	\$ -
594	57090 CLOTH/UNIFORM ALLOWANCE	\$ 6,900.00	\$ 7,400.00	\$ 6,900.00	\$ -	\$ -	\$ -
595	58600 SIDEWALK CONSTRUCTION	\$ 1,160.23	\$ 111.64	\$ 3,389.83	\$ 5,000.00	\$ -	\$ -
596	58601 GUARD RAILS	\$ -	\$ -	\$ -	\$ -	\$ -	\$ -
597	58602 ROAD RESURFACING EXPENSES	\$ -	\$ -	\$ -	\$ -	\$ -	\$ -
598	58603 UPGRADE UNACCEPTED STREETS	\$ -	\$ -	\$ -	\$ -	\$ -	\$ -
599	* TOT, 14420	\$ 638,462.93	\$ 924,278.34	\$ 909,727.07	\$ 528,700.00	\$ 593,600.00	\$ 593,600.00
600							
601							
602							
603							
604							
605							
606							
607							
608							
609							
610							
611							
612							
613							
614							
615							

ORG/ OBJ	DEPARTMENT	2007 EXPENDED	2008 EXPENDED	2009 EXPENDED	2010 BUDGETED	2011 Mayor	2011 Council
616	14421 PUBLIC WORKS						
617	51010 DEPT HEAD SALARY & WAGES	\$ 59,945.08	\$ 60,292.13	\$ 40,153.83	\$ 39,847.00	\$ 40,154.00	\$ 40,154.00
618	51012 CLERK/ASST SAL & WAGES	\$ 30,817.80	\$ 36,198.61	\$ 35,557.60	\$ 18,433.00	\$ 18,100.00	\$ 18,100.00
619	51013 PART TIME CLERK	\$ -	\$ -	\$ -	\$ -	\$ -	\$ -
620	51014 MAINTENANCE CREW SAL&WGS	\$ 656,394.82	\$ 687,889.68	\$ 666,317.73	\$ 625,151.00	\$ 641,078.00	\$ 641,078.00
621	51030 OVERTIME	\$ 37,977.30	\$ 40,814.52	\$ 38,203.73	\$ 37,800.00	\$ 38,000.00	\$ 38,000.00
622	51031 WEEK-END STANDBY	\$ 27,755.00	\$ 32,840.00	\$ 32,920.00	\$ 32,680.00	\$ 17,080.00	\$ 17,080.00
623	51102 WORKING OUT OF GRADE	\$ 3,404.32	\$ 3,291.55	\$ 4,339.47	\$ 5,000.00	\$ 5,000.00	\$ 5,000.00
624	51104 MECHANIC / WELDER RATING	\$ 2,080.00	\$ 2,098.00	\$ 2,088.00	\$ 2,080.00	\$ 2,120.00	\$ 2,120.00
625	51105 SICK LEAVE INCENTIVE	\$ 2,242.44	\$ 2,129.44	\$ 1,940.32	\$ 2,000.00	\$ 2,000.00	\$ 2,000.00
626	51460 LONGEVITY	\$ 9,360.00	\$ 9,960.00	\$ 10,210.00	\$ 11,130.00	\$ 9,580.00	\$ 9,580.00
627	51551 TERMINATION LEAVE	\$ -	\$ 902.40	\$ 22,522.22	\$ -	\$ -	\$ -
628	52150 COMMUNICATIONS	\$ 949.69	\$ 634.37	\$ 479.69	\$ 1,000.00	\$ 1,000.00	\$ 1,000.00
629	52170 PROFESSIONAL DEV & TRAVEL	\$ 161.25	\$ 226.25	\$ 246.25	\$ 200.00	\$ 250.00	\$ 250.00
630	52190 PROFESSIONAL SERVICES	\$ 1,011.95	\$ 680.94	\$ 707.50	\$ 1,000.00	\$ 1,000.00	\$ 1,000.00
631	52230 OFFICE SUPPLIES	\$ 967.77	\$ 1,052.88	\$ 417.45	\$ 1,000.00	\$ 1,000.00	\$ 1,000.00
632	55090 BOND--NEW VEHICLES	\$ -	\$ -	\$ -	\$ -	\$ -	\$ -
633	55123 NEW EQUIPMENT	\$ -	\$ -	\$ -	\$ -	\$ -	\$ -
634	55145 RADIO TOWER	\$ -	\$ -	\$ -	\$ -	\$ -	\$ -
635	57090 CLOTH/UNIFORM ALLOWANCE	\$ 350.00	\$ 350.00	\$ 350.00	\$ 9,400.00	\$ 9,700.00	\$ 9,700.00
636	* TOT, 14421	\$ 833,417.42	\$ 879,360.77	\$ 856,453.79	\$ 786,721.00	\$ 786,062.00	\$ 786,062.00
637							
638	14429 MUNICIPAL GARAGE						
639	52030 REPAIRS & MAINTENANCE	\$ 25,518.89	\$ 26,387.78	\$ 26,521.02	\$ 30,000.00	\$ 30,000.00	\$ 30,000.00
640	52050 MINOR EQUIPMENT	\$ 3,482.85	\$ 5,617.61	\$ 3,159.22	\$ 5,000.00	\$ 5,000.00	\$ 5,000.00
641	52110 ENERGY & UTILITIES	\$ 42,897.72	\$ 41,774.79	\$ 43,643.01	\$ 54,075.00	\$ 50,000.00	\$ 50,000.00
642	52150 COMMUNICATIONS	\$ 158.80	\$ 537.59	\$ 646.30	\$ 300.00	\$ 650.00	\$ 650.00
643	52170 PROFESSIONAL DEV & TRAVEL	\$ 881.00	\$ 1,736.00	\$ 2,076.80	\$ 500.00	\$ 1,000.00	\$ 1,000.00
644	52190 PROFESSIONAL SERVICES	\$ 6,537.88	\$ 8,212.78	\$ 9,520.50	\$ 8,000.00	\$ 8,500.00	\$ 8,500.00
645	52240 VEHICLE SUPPLIES	\$ 142,123.38	\$ 240,327.64	\$ 164,808.37	\$ 187,425.00	\$ 185,000.00	\$ 185,000.00
646	55011 HEATING SYSTEM IMPROVEMENTS	\$ -	\$ -	\$ -	\$ -	\$ -	\$ -
647	55107 OVERHEAD DOOR REPLACEMENTS	\$ -	\$ -	\$ -	\$ -	\$ -	\$ -
648	55123 NEW EQUIPMENT	\$ -	\$ -	\$ -	\$ -	\$ -	\$ -
649	55163 BUILDING REHAB	\$ 12,083.51	\$ 9,374.47	\$ 5,981.14	\$ 10,000.00	\$ 10,000.00	\$ 10,000.00
650	57090 CLOTH/UNIFORM ALLOWANCE	\$ 2,600.00	\$ 2,650.00	\$ 2,650.00	\$ -	\$ -	\$ -
651	57800 COLD STORAGE BUILDING	\$ -	\$ -	\$ -	\$ -	\$ -	\$ -
652	58152 PAINT BUILDING/RESURFACE	\$ -	\$ -	\$ -	\$ -	\$ -	\$ -
653	* TOT, 14429	\$ 236,284.03	\$ 336,618.66	\$ 259,006.36	\$ 295,300.00	\$ 290,150.00	\$ 290,150.00

654

655

656

657

658

659

ORG/ OBJ	DEPARTMENT	2007 EXPENDED	2008 EXPENDED	2009 EXPENDED	2010 BUDGETED	2011 Mayor	2011 Council	
660	14430	SOLID WASTE COLLECTION/DISPOSAL						
661	51011	TRANSFER STATN SUPER SALARY	\$ 25,877.28	\$ -	\$ -	\$ -	\$ -	
662	51018	TRANSFER STATN MONITOR SALARY	\$ 9,686.27	\$ -	\$ -	\$ -	\$ -	
663	51030	OVERTIME	\$ 97.44	\$ -	\$ -	\$ -	\$ -	
664	52030	REPAIRS & MAINTENANCE	\$ 12,234.95	\$ -	\$ -	\$ -	\$ -	
665	52050	MINOR EQUIPMENT	\$ 4,379.21	\$ -	\$ -	\$ -	\$ -	
666	52110	ENERGY & UTILITIES	\$ 23,511.22	\$ -	\$ -	\$ -	\$ -	
667	52150	COMMUNICATIONS	\$ 889.08	\$ -	\$ -	\$ -	\$ -	
668	52170	PROFESSIONAL DEV & TRAVEL	\$ 85.00	\$ -	\$ -	\$ -	\$ -	
669	52190	PROFESSIONAL SERVICES	\$ 7,421.10	\$ -	\$ -	\$ -	\$ -	
670	52232	TRASH BAGS	\$ 24,965.52	\$ -	\$ -	\$ -	\$ -	
671	52361	TRASH DISPOSAL	\$ 393,722.38	\$ -	\$ -	\$ -	\$ -	
672	55126	CURBSIDE RECYCLING	\$ 234,491.04	\$ -	\$ -	\$ -	\$ -	
673	55361	CURBSIDE RUBBISH COLLECT	\$ 425,595.96	\$ -	\$ -	\$ -	\$ -	
674	55363	CURBSIDE YARD WASTE COLLECTION	\$ 36,154.98	\$ -	\$ -	\$ -	\$ -	
675	55365	HOUSEHOLD HAZARDOUS WASTE	\$ 15,495.00	\$ -	\$ -	\$ -	\$ -	
676	55367	DROP OFF AREA	\$ -	\$ -	\$ -	\$ -	\$ -	
677	55371	MUNICIPAL DUMPSTER COLLECTION	\$ 27,445.81	\$ -	\$ -	\$ -	\$ -	
678	57090	CLOTH/UNIFORM ALLOWANCE	\$ 204.17	\$ -	\$ -	\$ -	\$ -	
679		* TOT/ 14430	\$ 1,242,256.41	\$ -	\$ -	\$ -	\$ -	
680								
681	14482	AIRPORT						
682	52030	REPAIRS & MAINTENANCE	\$ 3,515.68	\$ 5,763.66	\$ 1,463.96	\$ 3,750.00	\$ 3,750.00	
683	52050	MINOR EQUIPMENT	\$ 263.49	\$ 9.85	\$ 150.00	\$ 200.00	\$ 200.00	
684	52110	ENERGY & UTILITIES	\$ 5,621.51	\$ 5,953.91	\$ 6,758.23	\$ 6,000.00	\$ 6,000.00	
685	52150	COMMUNICATIONS	\$ 1,998.45	\$ 1,749.99	\$ 694.87	\$ 800.00	\$ 800.00	
686	52170	PROFESSIONAL DEV & TRAVEL	\$ -	\$ -	\$ -	\$ -	\$ -	
687	52190	AIRPORT MANAGER	\$ -	\$ -	\$ -	\$ -	\$ -	
688	52191	PROFESSIONAL SERVICES	\$ 420.78	\$ 2,155.61	\$ 282.00	\$ 1,500.00	\$ 1,500.00	
689	52210	SNOW & ICE	\$ -	\$ -	\$ -	\$ -	\$ -	
690	52230	OFFICE SUPPLIES	\$ 39.43	\$ 43.95	\$ 42.19	\$ 50.00	\$ 50.00	
691	52240	VEHICLE SUPPLIES	\$ 758.16	\$ 1,411.42	\$ 979.97	\$ 1,200.00	\$ 1,200.00	
692		* TOT/ 14482	\$ 12,617.50	\$ 17,088.39	\$ 10,371.22	\$ 13,500.00	\$ 13,500.00	
693								
694	14490	CEMETERY						
695	51024	MAINTENANCE CREW	\$ -	\$ -	\$ -	\$ -	\$ -	
696	52030	REPAIRS & MAINTENANCE	\$ 5,360.39	\$ 4,513.66	\$ 1,869.59	\$ 5,500.00	\$ 5,500.00	
697	52050	MINOR EQUIPMENT	\$ 283.82	\$ -	\$ 179.70	\$ 2,000.00	\$ 2,000.00	
698	52110	ENERGY & UTILITIES	\$ 741.56	\$ 714.14	\$ 1,407.69	\$ 2,500.00	\$ 2,500.00	
699	52150	COMMUNICATIONS	\$ -	\$ 146.50	\$ -	\$ 200.00	\$ 200.00	
700	52230	OFFICE SUPPLIES	\$ 272.35	\$ 317.75	\$ 199.84	\$ 400.00	\$ 400.00	
701	52985	REWARD-CEMETERY DAMAGES	\$ -	\$ -	\$ -	\$ -	\$ -	
702	57090	CLOTH/UNIFORM ALLOWANCE	\$ 1,200.00	\$ 1,000.00	\$ 1,000.00	\$ -	\$ -	
703		* TOT/ 14490	\$ 7,858.12	\$ 6,692.05	\$ 4,656.82	\$ 10,600.00	\$ 10,600.00	

ORG/ OBJ	DEPARTMENT	2007 EXPENDED	2008 EXPENDED	2009 EXPENDED	2010 BUDGETED	2011 Mayor	2011 Council
704	15512 HEALTH						
705	51010 DEPT HEAD SALARY & WAGES	\$ 61,900.54	\$ 68,636.77	\$ 70,269.03	\$ 34,866.00	\$ 35,135.00	\$ 35,135.00
706	51011 P/T AST SANI INSPE SAL&WG	\$ 28,499.71	\$ 30,397.30	\$ 30,233.19	\$ 30,002.00	\$ 30,233.00	\$ 30,233.00
707	51012 CLERK/ASST SAL & WAGES	\$ 30,817.80	\$ 35,130.60	\$ 34,570.35	\$ 34,045.00	\$ 35,131.00	\$ 35,131.00
708	51013 P/T CLERK/ASST SALARY & WAGES	\$ 16,592.95	\$ 17,826.13	\$ 18,362.31	\$ 17,225.00	\$ 17,225.00	\$ 17,225.00
709	51014 BOARD & COMM SAL & WAGES	\$ 3,496.21	\$ 3,331.96	\$ 3,498.36	\$ 3,500.00	\$ 3,500.00	\$ 3,500.00
710	51015 SCHOOL PHYSICIAN SAL&WGS	\$ -	\$ -	\$ -	\$ -	\$ -	\$ -
711	51016 AUDIO VISUAL EXAM SAL&WGS	\$ -	\$ -	\$ -	\$ -	\$ -	\$ -
712	51017 ANIMAL INSP SALARY & WAGE	\$ -	\$ -	\$ -	\$ -	\$ -	\$ -
713	51018 LANDFILL ATTENDENTS SAL&W	\$ -	\$ -	\$ -	\$ -	\$ -	\$ -
714	51023 TEMP CLERK SALARY & WAGES	\$ -	\$ -	\$ -	\$ -	\$ -	\$ -
715	51030 OVERTIME	\$ 108.95	\$ 2,068.94	\$ 1,602.92	\$ 1,000.00	\$ 1,000.00	\$ 1,000.00
716	51460 LONGEVITY	\$ 480.00	\$ 540.00	\$ 400.00	\$ 735.00	\$ 945.00	\$ 945.00
717	51551 TERMINATION LEAVE	\$ -	\$ -	\$ -	\$ -	\$ -	\$ -
718	52030 REPAIRS & MAINTENANCE	\$ 1,136.93	\$ 1,158.15	\$ 2,292.83	\$ 500.00	\$ 500.00	\$ 500.00
719	52050 MINOR EQUIPMENT	\$ 2,336.69	\$ -	\$ -	\$ 1,000.00	\$ 1,000.00	\$ 1,000.00
720	52110 ENERGY & UTILITIES	\$ 52.64	\$ -	\$ -	\$ -	\$ -	\$ -
721	52150 COMMUNICATIONS	\$ 3,850.37	\$ 5,073.97	\$ 3,699.59	\$ 4,000.00	\$ 4,000.00	\$ 4,000.00
722	52170 PROFESSIONAL DEV & TRAVEL	\$ 1,230.20	\$ 958.55	\$ 1,600.17	\$ 1,500.00	\$ 1,500.00	\$ 1,500.00
723	52190 PROFESSIONAL SERVICES	\$ 1,535.20	\$ 1,962.36	\$ 2,099.34	\$ 7,000.00	\$ 7,000.00	\$ 7,000.00
724	52191 PROF SERV-ENGINEER CELL 1,2,3	\$ -	\$ -	\$ -	\$ -	\$ -	\$ -
725	52192 LANDFILL MONITORING SERVICES	\$ -	\$ -	\$ -	\$ -	\$ -	\$ -
726	52230 OFFICE SUPPLIES	\$ 3,841.09	\$ 2,704.00	\$ 2,035.86	\$ 4,000.00	\$ 4,000.00	\$ 4,000.00
727	52232 TRASH BAGS	\$ -	\$ -	\$ -	\$ -	\$ -	\$ -
728	52361 TRASH DISPOSAL	\$ -	\$ -	\$ -	\$ -	\$ -	\$ -
729	54100 NURSING SERVICES	\$ 13,000.00	\$ 14,000.00	\$ 14,000.00	\$ 14,476.00	\$ 16,000.00	\$ 16,000.00
730	55126 CURBSIDE RECYCLING	\$ -	\$ -	\$ -	\$ -	\$ -	\$ -
731	55361 CURBSIDE RUBBISH COLLECT	\$ -	\$ -	\$ -	\$ -	\$ -	\$ -
732	55363 CURBSIDE YARD WASTE COLLECTION	\$ 7,777.76	\$ -	\$ -	\$ -	\$ -	\$ -
733	55365 HOUSEHOLD HAZARDOUS WASTE	\$ -	\$ -	\$ -	\$ -	\$ -	\$ -
734	55367 DROP OFF AREA	\$ -	\$ -	\$ -	\$ -	\$ -	\$ -
735	55369 LANDFILL OPERATIONS	\$ -	\$ -	\$ -	\$ -	\$ -	\$ -
736	55371 MUNICIPAL DUMPSTER COLLECTION	\$ -	\$ 21,951.13	\$ 20,811.01	\$ 20,000.00	\$ 20,000.00	\$ 20,000.00
737	57090 CLOTH/UNIFORM ALLOWANCE	\$ 700.00	\$ 700.00	\$ 700.00	\$ 700.00	\$ 700.00	\$ 700.00
738	* TOT/ 15512	\$ 177,357.04	\$ 206,439.86	\$ 206,174.96	\$ 174,549.00	\$ 177,869.00	\$ 177,869.00

739  
740  
741  
742  
743  
744  
745  
746  
747

ORG/ OBJ	DEPARTMENT	2007 EXPENDED	2008 EXPENDED	2009 EXPENDED	2010 BUDGETED	2011 Mayor	2011 Council
748	15541 COUNCIL ON AGING						
749	51010 DEPT HEAD SALARY & WAGES	\$ 44,393.18	\$ 49,062.38	\$ 50,192.39	\$ 49,808.00	\$ 50,193.00	\$ 50,193.00
750	51012 CLERKS/DISPATCHER SAL&WAG	\$ 30,817.80	\$ 31,864.45	\$ 31,300.26	\$ 30,881.00	\$ 31,865.00	\$ 31,865.00
751	51013 VAN DRIVER SAL & WAGES	\$ 30,555.20	\$ 31,591.44	\$ 31,591.44	\$ 31,350.00	\$ 31,592.00	\$ 31,592.00
752	51016 CUSTODIAN SALARY & WAGES	\$ 34,036.08	\$ 35,191.67	\$ 34,568.55	\$ 34,105.00	\$ 35,192.00	\$ 35,192.00
753	51023 ALT VAN DRIVER SALARY & WAGES	\$ 1,463.34	\$ 1,757.03	\$ 3,945.62	\$ 3,000.00	\$ 3,000.00	\$ 3,000.00
754	51025 OUTREACH PROGRAM SALARY & WAGE	\$ -	\$ -	\$ -	\$ -	\$ -	\$ -
755	51030 OVERTIME	\$ 1,167.57	\$ 1,113.75	\$ 526.13	\$ 600.00	\$ 600.00	\$ 600.00
756	51460 LONGEVITY	\$ 2,040.00	\$ 2,130.00	\$ 1,970.00	\$ 2,490.00	\$ 2,610.00	\$ 2,610.00
757	52030 REPAIRS & MAINTENANCE	\$ 3,265.81	\$ 2,580.08	\$ 4,538.98	\$ 500.00	\$ 2,500.00	\$ 2,500.00
758	52050 MINOR EQUIPMENT	\$ -	\$ -	\$ -	\$ 500.00	\$ 500.00	\$ 500.00
759	52110 ENERGY & UTILITIES	\$ 18,229.74	\$ 22,316.99	\$ 15,733.41	\$ 6,141.00	\$ 7,000.00	\$ 7,000.00
760	52150 COMMUNICATIONS	\$ -	\$ -	\$ -	\$ 200.00	\$ 200.00	\$ 200.00
761	52170 PROFESSIONAL DEV & TRAVEL	\$ -	\$ -	\$ -	\$ -	\$ -	\$ -
762	52190 PROFESSIONAL SERVICES	\$ -	\$ -	\$ -	\$ -	\$ -	\$ -
763	52230 OFFICE SUPPLIES	\$ 595.28	\$ 239.47	\$ 595.57	\$ 200.00	\$ 200.00	\$ 200.00
764	52990 HOME CARE ELDERLY	\$ -	\$ -	\$ -	\$ -	\$ -	\$ -
765	52995 RECREATIONAL	\$ -	\$ -	\$ -	\$ -	\$ -	\$ -
766	52996 MEDICAL	\$ -	\$ -	\$ -	\$ -	\$ -	\$ -
767	52999 OUTREACH PROGRAM	\$ -	\$ -	\$ -	\$ -	\$ -	\$ -
768	57090 CLOTH/UNIFORM ALLOWANCE	\$ 350.00	\$ 350.00	\$ 350.00	\$ 350.00	\$ 350.00	\$ 350.00
769	57800 BUILDING REPAIRS	\$ 9,663.06	\$ 10,813.11	\$ -	\$ -	\$ 4,000.00	\$ 4,000.00
770	* TOT, 15541	\$ 176,577.06	\$ 189,010.37	\$ 175,312.35	\$ 160,125.00	\$ 169,802.00	\$ 169,802.00
771							
772	15542 YOUTH COMMISSION						
773	52230 OFFICE SUPPLIES	\$ -	\$ -	\$ -	\$ 100.00	\$ 100.00	\$ 100.00
774	52995 YOUTH ACTIVITIES	\$ -	\$ -	\$ 200.00	\$ 200.00	\$ 200.00	\$ 200.00
775	* TOT, 15542	\$ -	\$ -	\$ 200.00	\$ 300.00	\$ 300.00	\$ 300.00
776							
777	15543 VETERANS						
778	51010 DEPT HEAD SALARY & WAGES	\$ 45,451.38	\$ 49,275.65	\$ 50,192.39	\$ 49,808.00	\$ 50,193.00	\$ 50,193.00
779	51012 CLERK/ASST SAL & WAGES	\$ -	\$ -	\$ -	\$ -	\$ -	\$ -
780	51023 TEMPORARY SALARY & WAGES	\$ -	\$ -	\$ -	\$ -	\$ -	\$ -
781	51460 LONGEVITY	\$ 450.00	\$ 480.00	\$ 310.00	\$ 540.00	\$ 570.00	\$ 570.00
782	52030 REPAIRS & MAINTENANCE	\$ 417.60	\$ 50.00	\$ -	\$ 55.00	\$ 250.00	\$ 250.00
783	52050 MINOR EQUIPMENT	\$ 6,874.70	\$ -	\$ 624.07	\$ 645.00	\$ -	\$ -
784	52170 PROFESSIONAL DEV & TRAVEL	\$ (13.80)	\$ -	\$ 35.00	\$ 70.00	\$ 100.00	\$ 100.00
785	52230 OFFICE SUPPLIES	\$ 530.58	\$ 893.00	\$ 764.99	\$ 800.00	\$ 1,500.00	\$ 1,500.00
786	57100 VETERANS BENEFITS	\$ 240,266.29	\$ 338,461.52	\$ 523,994.29	\$ 535,000.00	\$ 550,000.00	\$ 550,000.00
787	* TOT, 15543	\$ 293,976.75	\$ 389,160.17	\$ 575,920.74	\$ 586,918.00	\$ 602,613.00	\$ 602,613.00
788							
789							
790							
791							

ORG/ OBJ	DEPARTMENT	2007 EXPENDED	2008 EXPENDED	2009 EXPENDED	2010 BUDGETED	2011 Mayor	2011 Council
792	15549 DISABILITIES COMMISSION						
793	51012 CLERK/ASST SAL & WAGES	\$ -	\$ -	\$ -	\$ -	\$ -	\$ -
794	52150 COMMUNICATIONS	\$ -	\$ -	\$ -	\$ -	\$ -	\$ -
795	52170 PROFESSIONAL DEV & TRAVEL	\$ -	\$ -	\$ -	\$ 250.00	\$ 250.00	\$ 250.00
796	52190 PROFESSIONAL SERVICES	\$ -	\$ -	\$ -	\$ -	\$ -	\$ -
797	52230 OFFICE SUPPLIES	\$ -	\$ -	\$ -	\$ 50.00	\$ 50.00	\$ 50.00
798	* TOT/ 15549	\$ -	\$ -	\$ -	\$ 300.00	\$ 300.00	\$ 300.00

799

## 800 16610 LIBRARY

801	51010 DEPT HEAD SALARY & WAGES	\$ 56,196.66	\$ 63,475.74	\$ 65,250.00	\$ 64,750.00	\$ 65,250.00	\$ 65,250.00
802	51011 COOR ADLT/LIB SERV SAL&WG	\$ 35,679.28	\$ 36,890.80	\$ 36,890.76	\$ 36,609.00	\$ 36,891.00	\$ 36,891.00
803	51012 TECH/PUB SERV LIB II SAL&	\$ 122,804.64	\$ 126,819.76	\$ 126,779.12	\$ 125,808.00	\$ 126,780.00	\$ 126,780.00
804	51013 TECH/PUB SERV LIB III SAL & WA	\$ 32,608.34	\$ 34,160.50	\$ 33,603.75	\$ 33,347.00	\$ 33,604.00	\$ 33,604.00
805	51014 COOR YTH/LIB SERV SAL&WGS	\$ 35,715.88	\$ 36,890.80	\$ 36,890.78	\$ 36,609.00	\$ 36,891.00	\$ 36,891.00
806	51015 LIBRARIANS P/T SAL & WGS	\$ 51,740.54	\$ 61,556.88	\$ 44,553.20	\$ 20,000.00	\$ 35,000.00	\$ 35,000.00
807	51016 CUSTODIAN SALARY & WAGES	\$ 33,271.68	\$ 34,401.39	\$ 34,401.36	\$ 34,138.00	\$ 34,402.00	\$ 34,402.00
808	51017 LIBRARIANS F/T SALARY & WAGES	\$ -	\$ -	\$ -	\$ -	\$ -	\$ -
809	51030 OVERTIME	\$ 911.55	\$ 1,299.78	\$ 800.00	\$ -	\$ -	\$ -
810	51460 LONGEVITY	\$ 3,765.00	\$ 4,380.00	\$ 2,495.00	\$ 5,025.00	\$ 5,325.00	\$ 5,325.00
811	51551 TERMINATION LEAVE	\$ 758.05	\$ 345.35	\$ 1,796.03	\$ -	\$ -	\$ -
812	52030 REPAIRS & MAINTENANCE	\$ 300.00	\$ 300.00	\$ -	\$ 300.00	\$ 1,300.00	\$ 1,300.00
813	52110 ENERGY & UTILITIES	\$ 44,957.72	\$ 45,000.00	\$ 45,000.00	\$ 60,000.00	\$ 50,000.00	\$ 50,000.00
814	52150 COMMUNICATIONS	\$ 2,637.71	\$ 2,617.11	\$ 2,896.37	\$ 3,000.00	\$ 3,000.00	\$ 3,000.00
815	52190 PROFESSIONAL SERVICES	\$ 24,858.00	\$ 26,038.00	\$ 28,527.00	\$ 28,000.00	\$ 28,000.00	\$ 28,000.00
816	52230 OFFICE SUPPLIES	\$ 1,646.51	\$ 2,000.00	\$ 2,000.00	\$ 2,875.00	\$ 2,875.00	\$ 2,875.00
817	52231 LIBRARY SUPPLIES	\$ 2,348.62	\$ 3,053.04	\$ 2,500.00	\$ 3,500.00	\$ 3,500.00	\$ 3,500.00
818	52270 BOOKS & PERIODICALS	\$ 90,796.44	\$ 95,813.39	\$ 90,334.63	\$ 78,000.00	\$ 72,000.00	\$ 72,000.00
819	53333 LIBRARY DRAW IN TRANSIT	\$ -	\$ -	\$ -	\$ -	\$ -	\$ -
820	57500 GENERAL LIABILITY	\$ 9,677.00	\$ 9,121.46	\$ 10,540.00	\$ 11,000.00	\$ 11,000.00	\$ 11,000.00
821	58205 LIBRARY CONSTRUCTION	\$ 137,000.00	\$ 150,000.00	\$ 136,692.21	\$ -	\$ -	\$ -
822	* TOT/ 16610	\$ 687,673.62	\$ 734,164.00	\$ 701,950.21	\$ 542,961.00	\$ 545,818.00	\$ 545,818.00

823

## 824 16620 RECREATION

825	52030 REPAIR & MAINTENANCE-BIKE PATH	\$ -	\$ -	\$ -	\$ -	\$ -	\$ -
826	52170 PROFESSIONAL DEV & TRAVEL	\$ -	\$ -	\$ -	\$ -	\$ -	\$ -
827	52190 PROFESSIONAL SERVICES	\$ -	\$ -	\$ -	\$ -	\$ -	\$ -
828	52230 RECREATION SUPPLIES	\$ -	\$ -	\$ -	\$ -	\$ -	\$ -
829	55057 CELEBRATIONS&SPEC EVENTS	\$ 806.13	\$ 731.54	\$ -	\$ 1,000.00	\$ 1,000.00	\$ 1,000.00
830	* TOT/ 16620	\$ 806.13	\$ 731.54	\$ -	\$ 1,000.00	\$ 1,000.00	\$ 1,000.00

831

832

833

834

835

ORG/ OBJ	DEPARTMENT	2007 EXPENDED	2008 EXPENDED	2009 EXPENDED	2010 BUDGETED	2011 Mayor	2011 Council
836	16621 GREENWOOD MEMORIAL POOL						
837	51010 DEPT HEAD SALARY & WAGES	\$ 43,513.08	\$ 48,885.00	\$ 50,192.40	\$ 49,808.00	\$ 50,193.00	\$ 50,193.00
838	51012 CLERK/ASST SAL & WAGES	\$ 30,817.80	\$ 31,864.44	\$ 12,031.39	\$ -	\$ -	\$ -
839	51013 P/T LIFE GUARDS SAL&WGS	\$ 39,100.10	\$ 40,079.07	\$ 37,015.43	\$ 30,000.00	\$ 33,000.00	\$ 33,000.00
840	51016 CLEANER SALARY & WAGES	\$ -	\$ -	\$ -	\$ -	\$ -	\$ -
841	51030 OVERTIME	\$ -	\$ -	\$ 124.98	\$ -	\$ -	\$ -
842	51460 LONGEVITY	\$ 1,650.00	\$ 1,785.00	\$ 670.00	\$ 1,005.00	\$ 1,050.00	\$ 1,050.00
843	51551 TERMINATION LEAVE	\$ -	\$ -	\$ 32,170.88	\$ -	\$ -	\$ -
844	52030 REPAIRS & MAINTENANCE	\$ 19,002.05	\$ 10,586.50	\$ 8,938.87	\$ 3,000.00	\$ 10,000.00	\$ 10,000.00
845	52050 MINOR EQUIPMENT	\$ -	\$ -	\$ -	\$ -	\$ -	\$ -
846	52110 ENERGY & UTILITIES	\$ 55,185.65	\$ 69,882.86	\$ 61,301.91	\$ 30,000.00	\$ 43,000.00	\$ 43,000.00
847	52150 COMMUNICATIONS	\$ 569.36	\$ 693.66	\$ 733.08	\$ 800.00	\$ 800.00	\$ 800.00
848	52170 PROFESSIONAL DEV & TRAVEL	\$ -	\$ -	\$ -	\$ -	\$ -	\$ -
849	52230 OFFICE SUPPLIES	\$ 346.88	\$ 73.09	\$ 71.15	\$ 400.00	\$ 400.00	\$ 400.00
850	52231 POOL SUPPLIES	\$ 9,135.16	\$ 9,557.93	\$ 13,928.85	\$ 8,200.00	\$ 8,200.00	\$ 8,200.00
851	55161 NEW POOL FILTRATION SYSTEM	\$ -	\$ -	\$ -	\$ -	\$ -	\$ -
852	55162 NEW FIBERGLASS LOCKERS	\$ -	\$ -	\$ -	\$ -	\$ -	\$ -
853	* TOT/ 16621	\$ 199,320.08	\$ 213,407.55	\$ 217,178.94	\$ 123,213.00	\$ 146,643.00	\$ 146,643.00
854							
855	16625 MUNICIPAL GROUNDS						
856	51010 DEPT HEAD SALARY & WAGES	\$ 55,455.92	\$ 63,326.40	\$ 65,250.00	\$ 64,750.00	\$ 65,250.00	\$ 65,250.00
857	51012 CLERK/ASST SAL & WAGES	\$ 30,817.80	\$ 31,864.45	\$ 21,242.96	\$ 16,226.00	\$ 15,593.00	\$ 15,593.00
858	51013 MAINTENANCE CREW SAL&WGS	\$ 137,194.26	\$ 151,345.84	\$ 131,005.18	\$ 113,529.00	\$ 116,615.00	\$ 116,615.00
859	51014 BOARD & COMM SAL & WAGES	\$ 2,700.00	\$ 2,700.00	\$ 2,700.00	\$ 2,700.00	\$ 2,700.00	\$ 2,700.00
860	51020 P/T PLAYGROUNDS SAL&WGS	\$ -	\$ -	\$ -	\$ -	\$ -	\$ -
861	51030 OVERTIME	\$ 5,892.26	\$ 9,270.90	\$ 6,275.52	\$ 8,000.00	\$ 8,000.00	\$ 8,000.00
862	51102 WORKING OUT OF GRADE	\$ 913.60	\$ 1,340.40	\$ 889.90	\$ 2,000.00	\$ 2,000.00	\$ 2,000.00
863	51105 SICK LEAVE INCENTIVE	\$ 755.00	\$ 335.60	\$ 158.04	\$ 1,500.00	\$ 1,500.00	\$ 1,500.00
864	51460 LONGEVITY	\$ 4,380.00	\$ 3,300.00	\$ 2,170.00	\$ 2,250.00	\$ 2,370.00	\$ 2,370.00
865	51551 TERMINATION LEAVE	\$ 19,387.03	\$ -	\$ 35,951.04	\$ -	\$ -	\$ -
866	52030 REPAIRS & MAINTENANCE	\$ 7,471.16	\$ 10,328.85	\$ 9,101.61	\$ 10,000.00	\$ 10,000.00	\$ 10,000.00
867	52050 MINOR EQUIPMENT	\$ 68.34	\$ -	\$ 159.15	\$ 2,000.00	\$ 2,000.00	\$ 2,000.00
868	52150 COMMUNICATIONS	\$ 1,363.69	\$ 853.98	\$ 717.72	\$ 1,000.00	\$ 1,000.00	\$ 1,000.00
869	52230 OFFICE SUPPLIES	\$ 1,573.36	\$ 291.82	\$ 589.20	\$ 1,000.00	\$ 1,000.00	\$ 1,000.00
870	52990 FLOOD CONTROL	\$ -	\$ -	\$ -	\$ -	\$ -	\$ -
871	55120 NEW VEHICLE ACCOUNT			\$ 2,901.33			
872	57090 CLOTH/UNIFORM ALLOWANCE	\$ 350.00	\$ 350.00	\$ 350.00	\$ 2,050.00	\$ 2,050.00	\$ 2,050.00
873	* TOT/ 16625	\$ 268,322.42	\$ 275,308.24	\$ 279,461.65	\$ 227,005.00	\$ 230,078.00	\$ 230,078.00
874	16630 PARKS						
875	52030 REPAIRS & MAINTENANCE	\$ 391.97	\$ -	\$ 791.96	\$ 500.00	\$ 500.00	\$ 500.00
876	52110 ENERGY & UTILITIES	\$ 1,699.37	\$ 1,214.22	\$ 1,405.66	\$ 2,200.00	\$ 2,200.00	\$ 2,200.00
877	52150 COMMUNICATIONS	\$ -	\$ -	\$ -	\$ 300.00	\$ 300.00	\$ 300.00
878	58150 PLAYGROUND IMPROVEMENTS	\$ 5,831.01	\$ 5,116.66	\$ 4,321.82	\$ 6,000.00	\$ 6,000.00	\$ 6,000.00
879	* TOT/ 16630	\$ 7,922.35	\$ 6,330.88	\$ 6,519.44	\$ 9,000.00	\$ 9,000.00	\$ 9,000.00

ORG/ OBJ	DEPARTMENT	2007 EXPENDED	2008 EXPENDED	2009 EXPENDED	2010 BUDGETED	2011 Mayor	2011 Council
880	16650 HISTORICAL COMMISSION						
881	52170 PROFESSIONAL DEV & TRAVEL	\$ -	\$ -	\$ -	\$ -	\$ -	\$ -
882	52190 PROFESSIONAL SERVICES	\$ -	\$ -	\$ -	\$ -	\$ -	\$ -
883	52230 OFFICE SUPPLIES	\$ -	\$ -	\$ -	\$ 200.00	\$ 200.00	\$ 200.00
884	55141 CEMETERY RESTORATION	\$ -	\$ -	\$ -	\$ -	\$ -	\$ -
885	55149 LUCY STONE COMM MARKERS	\$ -	\$ -	\$ -	\$ -	\$ -	\$ -
886	55150 MARKER, UPTOWN HISTORIC DIST	\$ -	\$ -	\$ -	\$ -	\$ -	\$ -
887	55151 PRINTING, GARDNER: A PORTRAIT	\$ -	\$ -	\$ -	\$ -	\$ -	\$ -
888	* TOT, 16650	\$ -	\$ -	\$ -	\$ 200.00	\$ 200.00	\$ 200.00
889							
890	17710 DEBT SERVICE						
891	57600 PRINCIPAL - INSIDE DEBT	\$ 1,758,094.00	\$ 1,036,094.00	\$ 1,038,094.00	\$ 698,094.00	\$ 698,100.00	\$ 698,100.00
892	57601 PRINCIPAL - OUTSIDE DEBT	\$ 791,390.00	\$ 787,805.00	\$ 786,763.00	\$ 778,200.00	\$ 762,000.00	\$ 762,000.00
893	57610 INTEREST - INSIDE DEBT	\$ 142,305.25	\$ 116,736.00	\$ 88,555.75	\$ 64,667.00	\$ 45,500.00	\$ 45,500.00
894	57611 INTEREST - OUTSIDE DEBT	\$ 403,221.90	\$ 360,908.75	\$ 323,761.52	\$ 292,003.00	\$ 229,000.00	\$ 229,000.00
895	57621 INTEREST TEMPORARY LOANS	\$ 48,786.01	\$ 39,238.03	\$ 37,126.58	\$ 60,000.00	\$ 60,000.00	\$ 60,000.00
896	* TOT, 17710	\$ 3,143,797.16	\$ 2,340,781.78	\$ 2,274,300.85	\$ 1,892,964.00	\$ 1,794,600.00	\$ 1,794,600.00
897							
898	19910 CONTRIBUTORY RETIREMENT						
899	51011 EXECUTIVE SEC SAL & WAGES	\$ 38,050.22	\$ 42,958.23	\$ 45,663.73	\$ 47,672.00	\$ 51,569.00	\$ 51,569.00
900	51014 BOARD & COMM SAL & WAGES	\$ 15,300.00	\$ 15,300.00	\$ 15,300.00	\$ 15,300.00	\$ 15,300.00	\$ 15,300.00
901	51023 TEMP SALARY & WAGES	\$ -	\$ -	\$ -	\$ -	\$ -	\$ -
902	51030 OVERTIME	\$ -	\$ -	\$ -	\$ -	\$ -	\$ -
903	51460 LONGEVITY	\$ 300.00	\$ 330.00	\$ 160.00	\$ 390.00	\$ 420.00	\$ 420.00
904	51551 TERMINATION LEAVE	\$ -	\$ -	\$ -	\$ -	\$ -	\$ -
905	57070 CONTRIB RETIRE ASSESSMENT	\$ 2,276,768.00	\$ 2,361,526.00	\$ 2,432,310.00	\$ 2,473,828.00	\$ 2,517,859.00	\$ 2,517,859.00
906	57071 MILITARY LEAVE ASSESSMENT	\$ -	\$ -	\$ -	\$ -	\$ -	\$ -
907	57072 WORKER'S COMP ASSESSMENT	\$ -	\$ -	\$ -	\$ -	\$ -	\$ -
908	* TOT, 19910	\$ 2,330,418.22	\$ 2,420,114.23	\$ 2,493,433.73	\$ 2,537,190.00	\$ 2,585,148.00	\$ 2,585,148.00
909							
910	19911 NON-CONTRIB RETIREMENT						
911	57181 WIDOW'S ANNUITY	\$ -	\$ -	\$ -	\$ -	\$ -	\$ -
912	57182 WIDOW'S ANNUITY-CHAP 420	\$ -	\$ -	\$ -	\$ -	\$ -	\$ -
913	57183 WIDOW'S ANNUITY-CHAP 318	\$ -	\$ -	\$ -	\$ -	\$ -	\$ -
914	57185 POLICE PENSIONS	\$ -	\$ -	\$ -	\$ -	\$ -	\$ -
915	57186 FIRE PENSIONS	\$ -	\$ -	\$ -	\$ -	\$ -	\$ -
916	57188 SCHOOL PENSIONS	\$ 25,151.04	\$ 25,511.04	\$ 25,871.04	\$ 26,232.00	\$ 33,923.00	\$ 33,923.00
917	57189 HIGHWAY PENSIONS	\$ 7,760.40	\$ 7,993.20	\$ 5,341.56	\$ -	\$ -	\$ -
918	* TOT, 19911	\$ 32,911.44	\$ 33,504.24	\$ 31,212.60	\$ 26,232.00	\$ 33,923.00	\$ 33,923.00
919							
920							
921							
922							
923							

ORG/ OBJ	DEPARTMENT	2007 EXPENDED	2008 EXPENDED	2009 EXPENDED	2010 BUDGETED	2011 Mayor	2011 Council
924	19914	EMPLOYEE BENEFITS					
925	52200	111F CLAIMS REVIEW	\$ 6,300.00	\$ 6,300.00	\$ 6,300.00	\$ 6,600.00	\$ 6,600.00
926	57010	WORKER'S COMPENSATION	\$ 157,847.00	\$ 137,745.00	\$ 130,457.00	\$ 160,000.00	\$ 160,000.00
927	57011	WORKER'S COMPENSATION-SCHOOL	\$ -	\$ -	\$ -	\$ -	\$ -
928	57020	UNEMPLOYMENT COMPENSATION	\$ 680.00	\$ 680.00	\$ 755.00	\$ 1,000.00	\$ 1,000.00
929	57021	UNEMPLOYMENT COMPENSATION	\$ 61,111.39	\$ 61,887.00	\$ 32,035.57	\$ 225,000.00	\$ 245,000.00
930	57022	UNEMPLOYMENT COMPENSATION-SCHL	\$ 132,216.61	\$ 102,959.00	\$ 71,096.43	\$ -	\$ -
931	57040	MEDICARE	\$ 91,542.89	\$ 99,471.47	\$ 83,869.45	\$ 325,000.00	\$ 335,000.00
932	57041	MEDICARE-SCHOOL	\$ 190,727.77	\$ 196,986.69	\$ 225,860.28	\$ -	\$ -
933	57051	LIFE INSURANCE	\$ 23,786.84	\$ 24,937.88	\$ 20,674.42	\$ 40,000.00	\$ 54,000.00
934	57052	LIFE INSURANCE-SCHOOL	\$ 29,004.06	\$ 28,324.56	\$ 32,830.23	\$ -	\$ -
935	57060	HEALTH/DENTAL INSURANCE	\$ 2,357,552.40	\$ 2,475,406.29	\$ 2,000,248.01	\$ 5,860,139.00	\$ 6,870,784.00
936	57061	HEALTH/DENTAL INSURANCE-SCHOOL	\$ 3,034,709.91	\$ 3,132,180.18	\$ 3,241,666.84	\$ -	\$ -
937	57062	CHAP 41 MEDICAL ALLOWANCE	\$ 16,539.73	\$ 28,573.70	\$ 25,788.62	\$ 30,000.00	\$ 30,000.00
938	57064	PILGRIM HEALTH INSURANCE	\$ -	\$ -	\$ -	\$ -	\$ -
939	* TOT, 19914		\$ 6,102,018.60	\$ 6,295,451.77	\$ 5,871,581.85	\$ 6,647,739.00	\$ 7,702,384.00
940							
941	19945	INSURANCES					
942	57501	PROP & GEN LIABILITY INS	\$ 295,566.00	\$ 295,921.00	\$ 262,402.71	\$ 310,000.00	\$ 310,000.00
943	57503	PUBLIC OFFIC LIABILITY	\$ 38,492.50	\$ 40,752.50	\$ 48,188.93	\$ 50,000.00	\$ 50,000.00
944	57504	MOTOR VEHICLE FLOATER	\$ 65,403.34	\$ 75,921.10	\$ 75,068.71	\$ 80,000.00	\$ 80,000.00
945	* TOT, 19945		\$ 399,461.84	\$ 412,594.60	\$ 385,660.35	\$ 440,000.00	\$ 440,000.00
946							
947	19999	OTHER EXPENDITURES					
948	59040	TRANSFER TO STABILIZATION	\$ -	\$ 111,093.14	\$ -	\$ -	\$ -
949	59991	PARKING METER FEES TRANSF	\$ 19,775.52	\$ 6,336.50	\$ 1,133.62	\$ -	\$ -
950		OTHER TRANSFERS	\$ -	\$ 72,647.00	\$ -	\$ -	\$ -
951	59998	CABLE COMMISSION FEES TRANSFER	\$ 5,297.02	\$ 12,684.89	\$ 9,307.29	\$ -	\$ -
952	* TOT, 19999		\$ 25,072.54	\$ 202,761.53	\$ 10,440.91	\$ -	\$ -
953							
954		<b>TOTAL GENERAL GOVERNMENT</b>	<b>\$23,235,627.19</b>	<b>\$23,884,525.59</b>	<b>\$23,051,484.75</b>	<b>\$23,037,873.00</b>	<b>\$24,378,247.00</b>
955							
956							
957							
958							
959							
960							
961							
962							
963							
964							
965							
966							
967							

ORG/ OBJ	DEPARTMENT	2007 EXPENDED	2008 EXPENDED	2009 EXPENDED	2010 BUDGETED	2011 Mayor	2011 Council
968 61440	SEWER						
969 51010	DEPT HEAD SALARY & WAGES	\$ 10,054.98	\$ 11,999.86	\$ 20,077.17	\$ 19,924.00	\$ 20,077.00	\$ 20,077.00
970 51011	ENGINEER SALARY & WAGES	\$ 5,771.99	\$ 5,332.75	\$ 17,467.16	\$ 21,670.00	\$ 21,834.00	\$ 21,834.00
971 51012	CLERK/ASST SAL & WAGES	\$ 22,086.51	\$ 30,902.76	\$ 31,300.25	\$ 29,310.00	\$ 35,298.00	\$ 35,298.00
972 51013	PART TIME CLERK	\$ 14,320.06	\$ 15,270.88	\$ 15,544.22	\$ 14,556.00	\$ 15,825.00	\$ 15,825.00
973 51014	MAINTENANCE CREW-SAL&WGS	\$ 43,825.60	\$ 45,309.60	\$ 27,537.02	\$ 45,310.00	\$ 43,306.00	\$ 43,306.00
974 51015	PW CLERK SALARY	\$ -	\$ -	\$ -	\$ 8,324.00	\$ 9,050.00	\$ 9,050.00
975 51020	ENGINEER SALARY	\$ -	\$ -	\$ -	\$ 10,255.00	\$ 11,149.00	\$ 11,149.00
976 51030	OVERTIME	\$ 68.85	\$ 31.69	\$ 94.37	\$ 4,000.00	\$ 4,000.00	\$ 4,000.00
977 51090	CLOTH/UNIFORM ALLOWANCE	\$ -	\$ -	\$ -	\$ 700.00	\$ 700.00	\$ 700.00
978 51102	WORKING OUT OF GRADE	\$ -	\$ -	\$ -	\$ 1,000.00	\$ 1,000.00	\$ 1,000.00
979 51105	SICK LEAVE INCENTIVE	\$ -	\$ -	\$ 86.80	\$ 100.00	\$ 100.00	\$ 100.00
980 51460	LONGEVITY	\$ 1,020.00	\$ 1,215.00	\$ 1,260.00	\$ 195.00	\$ 960.00	\$ 960.00
981 51551	TERMINATION LEAVE	\$ -	\$ -	\$ 23,600.01	\$ -	\$ -	\$ -
982 52030	REPAIRS & MAINTENANCE	\$ -	\$ 25,600.40	\$ 6,450.00	\$ 500.00	\$ 1,000.00	\$ 1,000.00
983 52031	REPAIRS TO MAINS	\$ 21,381.33	\$ 3,583.78	\$ 6,610.95	\$ 25,000.00	\$ 25,000.00	\$ 25,000.00
984 52050	NEW EQUIPMENT	\$ -	\$ 35,744.00	\$ 90,100.00	\$ 125,000.00	\$ -	\$ -
985 52110	ENERGY & UTILITIES	\$ -	\$ -	\$ -	\$ -	\$ -	\$ -
986 52150	COMMUNICATIONS	\$ 783.55	\$ 790.77	\$ 595.45	\$ 1,000.00	\$ 1,000.00	\$ 1,000.00
987 52170	PROFESSIONAL DEV & TRAVEL	\$ 489.00	\$ 140.00	\$ 40.00	\$ 750.00	\$ 750.00	\$ 750.00
988 52190	PROFESSIONAL SERVICES	\$ 16,994.61	\$ 8,083.59	\$ 20,841.12	\$ 25,000.00	\$ 25,000.00	\$ 25,000.00
989 52192	WPAT ADMINISTRATIVE FEES	\$ -	\$ -	\$ -	\$ -	\$ -	\$ -
990 52230	OFFICE SUPPLIES	\$ 7,007.33	\$ 14,437.57	\$ 7,614.77	\$ 10,000.00	\$ 10,000.00	\$ 10,000.00
991 52231	CHEMICAL TREATMENT	\$ -	\$ 59,363.00	\$ 39,221.48	\$ 25,000.00	\$ 25,000.00	\$ 25,000.00
992 52360	AWWTP CONTRACT OPERATIONS	\$ 971,652.65	\$ 1,004,056.44	\$ 1,181,782.61	\$ 1,225,766.00	\$ 1,262,399.00	\$ 1,262,399.00
993 52380	INDIRECT COSTS REIMBURSE	\$ 82,593.57	\$ 87,289.01	\$ 111,302.87	\$ -	\$ -	\$ -
994 55032	COPPER OPTIMIZATION STUDY	\$ -	\$ -	\$ -	\$ -	\$ -	\$ -
995 55034	FACILITY ASSET INVENTORY	\$ -	\$ -	\$ -	\$ -	\$ -	\$ -
996 55123	COLD STORAGE BUILDING	\$ 4,950.00	\$ -	\$ -	\$ -	\$ -	\$ -
997 55139	I & I REMOVAL	\$ 54,874.10	\$ 283,127.07	\$ 4,898.61	\$ 600,000.00	\$ 500,000.00	\$ 500,000.00
998 56902	TAXES OTHER TOWNS	\$ -	\$ -	\$ -	\$ 300.00	\$ 300.00	\$ 300.00
999 57090	CLOTH/UNIFORM ALLOWANCE	\$ 700.00	\$ 700.00	\$ 700.00	\$ -	\$ -	\$ -
1000 57601	PRINCIPAL - OUTSIDE DEBT	\$ 165,216.00	\$ 155,973.14	\$ 156,279.14	\$ 156,111.00	\$ 155,933.00	\$ 155,933.00
1001 57611	INTEREST - OUTSIDE DEBT	\$ 95,328.87	\$ 81,872.02	\$ 75,725.23	\$ 69,415.00	\$ 63,020.00	\$ 63,020.00
1002 62050	ENCUMB NEW EQUIPMENT	\$ -	\$ 40,956.00	\$ -	\$ -	\$ -	\$ -
1003 62190	ENCUMB PROFESSIONAL SERV	\$ 14,742.29	\$ -	\$ -	\$ -	\$ -	\$ -
1004 62230	ENCUMB OFFICE SUPPLIES	\$ -	\$ -	\$ -	\$ -	\$ -	\$ -
1005 62231	ENCUMB CHEMICAL TREATMENT	\$ -	\$ 17,407.00	\$ -	\$ -	\$ -	\$ -
1006 62360	ENCUMB AWWT CONT&OPERATIO	\$ 182,032.18	\$ 88,332.05	\$ -	\$ -	\$ -	\$ -
1007 65032	ENC COPPER OPTIMIZATION STUDY	\$ 845.00	\$ -	\$ -	\$ -	\$ -	\$ -
1008 65034	ENC. FACILITY ASSESS. INVENTOR	\$ 24,787.52	\$ 13,227.00	\$ -	\$ -	\$ -	\$ -
1009 65123	ENCUMB COLD STORAGE BUILDING	\$ 7,784.98	\$ -	\$ -	\$ -	\$ -	\$ -
1010 65139	ENCUMB I & I REMOVAL	\$ 581,060.49	\$ 207,496.27	\$ -	\$ -	\$ -	\$ -
1011	* TOT/ 61440	\$ 2,330,371.46	\$ 2,238,241.65	\$ 1,839,129.23	\$ 2,419,186.00	\$ 2,232,701.00	\$ 2,232,701.00

ORG/ OBJ	DEPARTMENT	2007 EXPENDED	2008 EXPENDED	2009 EXPENDED	2010 BUDGETED	2011 Mayor	2011 Council
1012 62450	WATER						
1013 51010	DEPT HEAD SALARY & WAGES	\$ -	\$ 6,000.32	\$ 20,076.65	\$ 19,924.00	\$ 20,077.00	\$ 20,077.00
1014 51011	ENGINEER SALARY & WAGES	\$ -	\$ 2,666.90	\$ 17,466.64	\$ 21,670.00	\$ 21,831.00	\$ 21,831.00
1015 51012	CLERK/ASST SAL & WAGES	\$ 31,114.00	\$ 35,162.40	\$ 34,672.58	\$ 32,467.00	\$ 35,298.00	\$ 35,298.00
1016 51014	MAINTENANCE CREW SAL&WGS	\$ 43,825.60	\$ 45,309.60	\$ 45,309.60	\$ 45,310.00	\$ 50,530.00	\$ 50,530.00
1017 51015	PW CLERK SALARY	\$ -	\$ -	\$ -	\$ 8,324.00	\$ 9,050.00	\$ 9,050.00
1018 51020	ENGINEER SALARY	\$ -	\$ -	\$ -	\$ 10,255.00	\$ 11,149.00	\$ 11,149.00
1019 51030	OVERTIME	\$ 1,377.32	\$ 1,383.12	\$ 1,323.62	\$ 4,000.00	\$ 2,000.00	\$ 2,000.00
1020 51031	STANDBY	\$ 5,120.00	\$ 5,120.00	\$ 5,140.00	\$ 5,200.00	\$ -	\$ -
1021 51090	CLOTH/UNIFORM ALLOWANCE	\$ -	\$ -	\$ -	\$ 700.00	\$ 700.00	\$ 700.00
1022 51105	SICK LEAVE INCENTIVE	\$ -	\$ -	\$ -	\$ 100.00	\$ 100.00	\$ 100.00
1023 51460	LONGEVITY	\$ 420.00	\$ 480.00	\$ 540.00	\$ 600.00	\$ 660.00	\$ 660.00
1024 52030	REPAIRS & MAINTENANCE	\$ 359.39	\$ 14,216.27	\$ 4,242.31	\$ 1,000.00	\$ 1,000.00	\$ 1,000.00
1025 52031	REPAIRS TO MAINS	\$ 36,978.70	\$ 65,713.22	\$ 161,030.92	\$ 25,000.00	\$ 25,000.00	\$ 25,000.00
1026 52050	NEW EQUIPMENT	\$ -	\$ 35,744.00	\$ -	\$ -	\$ -	\$ -
1027 52110	ENERGY & UTILITIES	\$ -	\$ -	\$ -	\$ 100.00	\$ 100.00	\$ 100.00
1028 52150	COMMUNICATIONS	\$ 626.70	\$ 620.46	\$ 557.21	\$ 1,000.00	\$ 1,000.00	\$ 1,000.00
1029 52170	PROFESSIONAL DEV & TRAVEL	\$ 732.99	\$ 830.00	\$ 841.00	\$ 1,000.00	\$ 1,000.00	\$ 1,000.00
1030 52190	PROFESSIONAL SERVICES	\$ 13,773.83	\$ 486.94	\$ 7,276.74	\$ 25,000.00	\$ 25,000.00	\$ 25,000.00
1031 52191	PRIVATIZATION EXPENSES	\$ -	\$ -	\$ -	\$ -	\$ -	\$ -
1032 52192	WPAT ADMINISTRATIVE FEES	\$ 15,775.35	\$ 20,037.26	\$ 19,381.44	\$ 12,300.00	\$ 12,300.00	\$ 12,300.00
1033 52230	OFFICE SUPPLIES	\$ 6,756.47	\$ 12,497.70	\$ 7,296.32	\$ 10,000.00	\$ 10,000.00	\$ 10,000.00
1034 52359	CONTRACT OPERATIONS	\$ 1,189,867.81	\$ 1,219,603.90	\$ 1,389,561.27	\$ 1,338,607.00	\$ 1,369,630.00	\$ 1,369,630.00
1035 52360	WATER QUAL ADVIS SERVICES	\$ -	\$ -	\$ -	\$ -	\$ -	\$ -
1036 52380	INDIRECT COSTS REIMBURSE	\$ 122,498.21	\$ 122,239.89	\$ 141,756.35	\$ -	\$ -	\$ -
1037 56902	TAXES OTHER TOWNS	\$ 3,109.06	\$ 3,183.88	\$ -	\$ 3,000.00	\$ 3,200.00	\$ 3,200.00
1038 57090	CLOTH/UNIFORM ALLOWANCE	\$ 700.00	\$ 700.00	\$ 700.00	\$ -	\$ -	\$ -
1039 57600	PRINCIPAL - INSIDE DEBT	\$ 1,391.00	\$ 1,391.00	\$ 1,391.00	\$ 1,391.00	\$ 1,391.00	\$ 1,391.00
1040 57601	PRINCIPAL - OUTSIDE DEBT	\$ 1,091,012.45	\$ 1,073,850.46	\$ 1,087,538.43	\$ 1,104,269.00	\$ 1,029,067.00	\$ 1,029,067.00
1041 57610	INTEREST - INSIDE DEBT	\$ 1,182.00	\$ 1,112.00	\$ 1,043.00	\$ 973.00	\$ 973.00	\$ 973.00
1042 57611	INTEREST - OUTSIDE DEBT	\$ 793,571.14	\$ 748,346.23	\$ 689,853.82	\$ 648,764.00	\$ 564,057.00	\$ 564,057.00
1043 58513	PINE STREET WATER MAIN	\$ -	\$ -	\$ -	\$ -	\$ -	\$ -
1044 62031	ENCUMB REPAIRS TO MAINS	\$ -	\$ 4,796.41	\$ -	\$ -	\$ -	\$ -
1045 62050	ENCUMB NEW EQUIPMENT	\$ -	\$ 41,735.00	\$ -	\$ -	\$ -	\$ -
1046 62150	ENCUMB COMMUNICATIONS	\$ -	\$ -	\$ -	\$ -	\$ -	\$ -
1047 62190	ENCUMB PROFESSIONAL SERV	\$ 2,538.02	\$ -	\$ -	\$ -	\$ -	\$ -
1048 62194	ENCUMB DAM INSPECTIONS	\$ 4,812.77	\$ 31,000.00	\$ -	\$ -	\$ -	\$ -
1049 62232	ENC WATER SYSTEM SUPPLIES	\$ -	\$ 3,347.04	\$ -	\$ -	\$ -	\$ -
1050 62359	ENCUMB CONTRACT OPERATIONS	\$ 200,589.01	\$ 108,169.81	\$ -	\$ -	\$ -	\$ -
1051 65034	ENC. FACILITY ASSESS. INVENTOR	\$ 17,137.48	\$ -	\$ -	\$ -	\$ -	\$ -
1052 68252	ENC BOND-WATER TREAT PLAN	\$ -	\$ -	\$ -	\$ -	\$ -	\$ -
1053 68510	ENCUMB WATER MAIN REPLACEMENT	\$ 41,618.90	\$ 55,495.00	\$ -	\$ -	\$ -	\$ -
1054 68513	ENC. PINE ST. WATER MAIN	\$ 88,614.50	\$ -	\$ -	\$ -	\$ -	\$ -
1055	* TOT/ 62450	\$ 3,715,502.70	\$ 3,661,238.81	\$ 3,636,998.90	\$ 3,320,954.00	\$ 3,195,113.00	\$ 3,195,113.00

ORG/ OBJ	DEPARTMENT	2007 EXPENDED	2008 EXPENDED	2009 EXPENDED	2010 BUDGETED	2011 Mayor	2011 Council
1056							
1057	63640 GOLF COURSE						
1058	51010 DEPT HEAD SALARY & WAGES	\$ 58,802.64	\$ 64,806.81	\$ 63,238.78	\$ 57,220.00	\$ 61,569.00	\$ 61,569.00
1059	51011 GOLF PRO SALARY	\$ -	\$ -	\$ 20,576.96	\$ 51,250.00	\$ 54,005.00	\$ 54,005.00
1060	51012 CLERK/ASST SAL & WAGES	\$ 15,408.64	\$ 15,932.79	\$ 15,677.15	\$ 15,933.00	\$ 15,933.00	\$ 15,933.00
1061	51013 LABORERS SALARY & WAGES	\$ 190,918.72	\$ 197,657.54	\$ 201,761.47	\$ 182,000.00	\$ 182,000.00	\$ 182,000.00
1062	51018 PRO SHOP SALARY & WAGES	\$ -	\$ -	\$ 17,749.00	\$ 49,200.00	\$ 49,200.00	\$ 49,200.00
1063	51030 OVERTIME	\$ 9,392.89	\$ 9,292.80	\$ 10,814.78	\$ 8,900.00	\$ 8,900.00	\$ 8,900.00
1064	51090 CLOTH/UNIFORM ALLOWANCE	\$ -	\$ -	\$ -	\$ 2,800.00	\$ 2,650.00	\$ 2,650.00
1065	51102 WORKING OUT OF GRADE	\$ -	\$ -	\$ -	\$ -	\$ -	\$ -
1066	51460 LONGEVITY	\$ 4,665.00	\$ 4,860.00	\$ 5,055.00	\$ 5,650.00	\$ 3,930.00	\$ 3,930.00
1067	51551 TERMINATION LEAVE	\$ -	\$ -	\$ 61,172.99	\$ -	\$ -	\$ -
1068	52030 REPAIRS & MAINTENANCE	\$ 49,898.92	\$ 60,780.47	\$ 48,907.29	\$ 54,400.00	\$ 54,400.00	\$ 54,400.00
1069	52031 CART RENTALS	\$ -	\$ -	\$ 6,855.95	\$ 85,078.00	\$ 69,960.00	\$ 69,960.00
1070	52050 EQUIPMENT	\$ 13,452.68	\$ 29,491.88	\$ 3,127.50	\$ 28,500.00	\$ 26,500.00	\$ 26,500.00
1071	52110 ENERGY & UTILITIES	\$ 25,078.32	\$ 31,178.56	\$ 28,545.25	\$ 31,000.00	\$ 31,000.00	\$ 31,000.00
1072	52150 COMMUNICATIONS	\$ 5,350.73	\$ 5,287.09	\$ 5,941.54	\$ 5,500.00	\$ 5,500.00	\$ 5,500.00
1073	52170 PROFESSIONAL DEV & TRAVEL	\$ 4,990.91	\$ 4,293.79	\$ 3,401.55	\$ 6,450.00	\$ 6,450.00	\$ 6,450.00
1074	52190 GOLF PRO	\$ 48,499.90	\$ 50,499.90	\$ 33,666.60	\$ -	\$ -	\$ -
1075	52191 PROFESSIONAL SERVICES	\$ 2,386.14	\$ 2,478.91	\$ 1,580.47	\$ 3,000.00	\$ 3,000.00	\$ 3,000.00
1076	52230 GENERAL SUPPLIES	\$ 35,784.13	\$ 40,717.42	\$ 37,326.84	\$ 39,000.00	\$ 39,000.00	\$ 39,000.00
1077	52231 PRO SHOP	\$ -	\$ -	\$ -	\$ 17,500.00	\$ -	\$ -
1078	52240 VEHICLE SUPPLIES	\$ 5,289.99	\$ 8,932.24	\$ 10,373.95	\$ 12,000.00	\$ 14,000.00	\$ 14,000.00
1079	52380 INDIRECT COSTS REIMBURSE	\$ 129,645.85	\$ 142,196.11	\$ 143,489.21	\$ 8,500.00	\$ 8,500.00	\$ 8,500.00
1080	55072 GOLF COURSE IMPROVEMENTS	\$ -	\$ -	\$ -	\$ 30,000.00	\$ -	\$ -
1081	55073 GOLF COURSE PUMP STATION	\$ -	\$ -	\$ -	\$ -	\$ -	\$ -
1082	55079 FAIRWAY DRAINAGE	\$ -	\$ -	\$ -	\$ -	\$ -	\$ -
1083	57090 CLOTH/UNIFORM ALLOWANCE	\$ 3,150.00	\$ 3,150.00	\$ 3,150.00	\$ -	\$ -	\$ -
1084	58251 RESTAURANT RENOVATIONS	\$ -	\$ -	\$ -	\$ -	\$ -	\$ -
1085	59998 TRANSFER TO SEWER FUND	\$ -	\$ -	\$ -	\$ -	\$ -	\$ -
1086	61551 ENCUMB TERM LEAVE	\$ -	\$ -	\$ -	\$ -	\$ -	\$ -
1087	62030 ENCUMB REPAIRS & MAINTEN	\$ -	\$ -	\$ -	\$ -	\$ -	\$ -
1088	62050 ENCUMB EQUIPMENT	\$ -	\$ 23,453.00	\$ -	\$ -	\$ -	\$ -
1089	62110 ENCUMB ENERGY & UTILITIES	\$ -	\$ -	\$ -	\$ -	\$ -	\$ -
1090	62170 ENCUMB PROF DEVELOPMENT & TRAV	\$ -	\$ -	\$ -	\$ -	\$ -	\$ -
1091	62191 ENCUMB PROFESSIONAL SERVICES	\$ -	\$ -	\$ -	\$ -	\$ -	\$ -
1092	65072 ENCUMB GOLF COURSE IMPROVEMENT	\$ 19,999.94	\$ -	\$ -	\$ -	\$ -	\$ -
1093	65073 ENCUMB GOLF COURSE PUMP STATIO	\$ -	\$ -	\$ -	\$ -	\$ -	\$ -
1094	65079 ENCUMB FAIRWAY DRAINAGE	\$ -	\$ -	\$ -	\$ -	\$ -	\$ -
1095	68251 ENCUMB RESTAURANT RENOVAT	\$ -	\$ -	\$ -	\$ -	\$ -	\$ -
1096	69998 ENCUMB TRANS TO SEWER FUND	\$ -	\$ -	\$ -	\$ -	\$ -	\$ -
1097	* TOT/ 63640	\$ 622,715.40	\$ 695,009.31	\$ 722,412.28	\$ 693,881.00	\$ 636,497.00	\$ 636,497.00
1098							
1099							

ORG/ OBJ	DEPARTMENT	2007 EXPENDED	2008 EXPENDED	2009 EXPENDED	2010 BUDGETED	2011 Mayor	2011 Council
1100 64433	LANDFILL CLOSURE EXPENSES						
1101 51010	DEPT HEAD	\$ -	\$ -	\$ -	\$ 17,433.00	\$ 17,568.00	\$ 17,568.00
1102 51012	LANDFILL SUPERVISOR SALARY	\$ -	\$ 18,999.76	\$ 19,007.04	\$ 19,951.00	\$ 19,951.00	\$ 19,951.00
1103 52030	FINAL COVER MAINTENANCE	\$ -	\$ 13,905.25	\$ 8,900.00	\$ 15,000.00	\$ 15,000.00	\$ 15,000.00
1104 52031	REPAIRS TO PUMPS			\$ 8,900.00		\$ 10,000.00	\$ 10,000.00
1105 52050	MINOR EQUIPMENT	\$ -	\$ 205.75	\$ -	\$ -	\$ -	\$ -
1106 52110	ENERGY & UTILITIES	\$ -	\$ 12,308.83	\$ 11,600.11	\$ 24,000.00	\$ 10,000.00	\$ 10,000.00
1107 52150	COMMUNICATIONS	\$ -	\$ 375.57	\$ 1,269.27	\$ 1,400.00	\$ 1,400.00	\$ 1,400.00
1108 52190	PROFESSIONAL SERVICES	\$ 37,303.95	\$ 70,879.50	\$ 76,121.36	\$ 60,000.00	\$ 40,000.00	\$ 40,000.00
1109 52270	AIR POLLUTION CONTROL MAINTENA	\$ 139,696.17	\$ -	\$ -	\$ 10,000.00	\$ 5,000.00	\$ 5,000.00
1110 52271	GROUNDWATER MONITORING	\$ 26,702.81	\$ 11,360.34	\$ 70.00	\$ 20,000.00	\$ 20,000.00	\$ 20,000.00
1111 52272	SULFUR CONTROL	\$ 17,323.37	\$ 38,070.79	\$ 13,075.87	\$ 15,000.00	\$ 12,000.00	\$ 12,000.00
1112 52380	INDIRECT COSTS REIMBURSE	\$ 2,642.55	\$ 6,620.53	\$ 8,890.44	\$ -	\$ -	\$ -
1113 68160	ENCUMB	\$ -	\$ -	\$ -	\$ (185,784.00)	\$ (153,919.00)	\$ (153,919.00)
1114 **	TOT 640	\$ 223,668.85	\$ 172,726.32	\$ 147,834.09	\$ (3,000.00)	\$ (3,000.00)	\$ (3,000.00)
1115							
1116 65430	SOLID WASTE EXPENSES						
1117 51010	DEPT HEAD	\$ -	\$ -	\$ -	\$ 17,433.00	\$ 17,568.00	\$ 17,568.00
1118 51012	TRANSFER STATN SUPER SALARY	\$ -	\$ 20,901.92	\$ 20,894.64	\$ 19,951.00	\$ 19,951.00	\$ 19,951.00
1119 51013	ACCOUNT CLERK SALARY	\$ -	\$ 12,252.82	\$ 15,544.22	\$ 15,825.00	\$ 15,825.00	\$ 15,825.00
1120 51018	TRANSFER STATN MONITOR SAL	\$ -	\$ 13,373.89	\$ 13,242.53	\$ 15,200.00	\$ 15,200.00	\$ 15,200.00
1121 51030	OVERTIME	\$ -	\$ 401.32	\$ 558.96	\$ 500.00	\$ 500.00	\$ 500.00
1122 51090	CLOTH/UNIFORM ALLOWANCE	\$ -	\$ -	\$ -	\$ 700.00	\$ 700.00	\$ 700.00
1123 51460	LONGEVITY	\$ -	\$ 165.00	\$ 180.00	\$ 195.00	\$ 195.00	\$ 195.00
1124 52030	REPAIRS & MAINTENANCE	\$ -	\$ 987.44	\$ 1,459.62	\$ 10,000.00	\$ 10,000.00	\$ 10,000.00
1125 52050	MINOR EQUIPMENT	\$ -	\$ 472.13	\$ 68.79	\$ 1,000.00	\$ 1,000.00	\$ 1,000.00
1126 52110	ENERGY & UTILITIES	\$ -	\$ 1,718.77	\$ 222.30	\$ 7,000.00	\$ 7,000.00	\$ 7,000.00
1127 52150	COMMUNICATIONS	\$ -	\$ 158.19	\$ (97.19)	\$ 500.00	\$ 500.00	\$ 500.00
1128 52170	PROFESSIONAL DEV & TRAVEL	\$ -	\$ -	\$ -	\$ 500.00	\$ 500.00	\$ 500.00
1129 52190	PROFESSIONAL SERVICES	\$ -	\$ 7,925.69	\$ 7,303.10	\$ 5,000.00	\$ 20,000.00	\$ 20,000.00
1130 52230	OFFICE SUPPLIES	\$ -	\$ 1,928.20	\$ -	\$ 1,000.00	\$ 500.00	\$ 500.00
1131 52232	TRASH BAGS	\$ -	\$ -	\$ -	\$ 50,000.00	\$ 65,000.00	\$ 65,000.00
1132 52240	VEHICLE SUPPLIES	\$ -	\$ 533.12	\$ 1,404.82	\$ 200.00	\$ 2,000.00	\$ 2,000.00
1133 52361	TRASH DISPOSAL	\$ -	\$ 350,512.31	\$ 194,419.36	\$ 430,000.00	\$ 300,000.00	\$ 300,000.00
1134 52362	RECYCLING PROCESSING	\$ -	\$ -	\$ -	\$ -	\$ 24,000.00	\$ 24,000.00
1135 52380	INDIRECT COSTS REIMBURSE	\$ -	\$ 26,510.81	\$ 30,291.15	\$ -	\$ -	\$ -
1136 55123	NEW EQUIPMENT	\$ -	\$ -	\$ -	\$ -	\$ 140,000.00	\$ 140,000.00
1137 55126	CURBSIDE RECYCLING	\$ -	\$ 239,415.28	\$ 248,020.29	\$ 247,556.00	\$ 170,000.00	\$ 170,000.00
1138 55361	CURBSIDE RUBBISH COLLECT	\$ -	\$ 434,533.52	\$ 449,307.60	\$ 449,308.00	\$ 452,453.00	\$ 452,453.00
1139 55363	CURBSIDE YARD WASTE COLLECTION	\$ -	\$ 36,914.22	\$ 38,169.36	\$ 42,420.00	\$ 55,000.00	\$ 55,000.00
1140 55365	HOUSEHOLD HAZARDOUS WASTE	\$ -	\$ 15,820.40	\$ 8,179.14	\$ 16,359.00	\$ 15,000.00	\$ 15,000.00
1141 57090	CLOTH/UNIFORM ALLOWANCE	\$ -	\$ 350.00	\$ 700.00	\$ -	\$ -	\$ -
1142 62361	ENCUMB TRASH	\$ -	\$ -	\$ -	\$ -	\$ -	\$ -
1143 *	TOT/ 65430	\$ -	\$ 1,164,875.03	\$ 1,029,868.69	\$ 1,330,647.00	\$ 1,332,892.00	\$ 1,332,892.00

ORG/ OBJ	DEPARTMENT	2007 EXPENDED	2008 EXPENDED	2009 EXPENDED	2010 BUDGETED	2011 Mayor	2011 Council
1144							
1145							
1146							
1147	<b>ENTERPRISE ACCOUNT TOTALS</b>	<b>\$ 6,892,258.41</b>	<b>\$ 7,932,091.12</b>	<b>\$ 9,503,972.95</b>	<b>\$ 7,761,668.00</b>	<b>\$ 7,394,203.00</b>	<b>\$ 7,394,203.00</b>
1148							
1149							
1150	13960 SCHOOL EXPENSES						
1151	51000 SCHOOL EXPENSES	\$18,978,877.00	\$19,592,095.00	\$20,142,535.00	\$19,529,838.00	\$17,998,568.00	\$17,998,568.00
1152	68000 ENCUMBERED SCHOOL EXPENSES	\$ -	\$ -	\$ -	\$ -	\$ -	\$ -
1153	51207 CROSSING GUARDS	\$ 19,913.00	\$ 60,000.00	\$ 59,302.25	\$ 60,000.00	\$ 60,000.00	\$ 60,000.00
1154	52800 REGUALR TRANSPORTATION	\$ 441,418.00	\$ 475,000.00	\$ 316,725.60	\$ 490,000.00	\$ 490,000.00	\$ 490,000.00
1155	63500 ENC. REGULAR TRANSPORTATION	\$ -	\$ -	\$ -	\$ -	\$ -	\$ -
1156	55804 SPED TRANSPORTATION	\$ 832,000.00	\$ 875,000.00	\$ 534,466.87	\$ 950,000.00	\$ 880,000.00	\$ 880,000.00
1157	65804 ENC. SPED TRANSPORTATION	\$ 44,440.00	\$ -	\$ -	\$ -	\$ -	\$ -
1158	* TOT/ 13960	\$20,316,648.00	\$21,002,095.00	\$21,053,029.72	\$21,029,838.00	\$19,428,568.00	\$19,428,568.00
1159							
1160							
1161	<b>TOTAL GENERAL GOVERNMENT</b>	<b>\$23,235,627.19</b>	<b>\$23,884,525.59</b>	<b>\$23,051,484.75</b>	<b>\$23,037,873.00</b>	<b>\$24,378,247.00</b>	<b>\$24,378,247.00</b>
1162	<b>ENTERPRISE ACCOUNT TOTALS</b>	<b>\$ 6,892,258.41</b>	<b>\$ 7,932,091.12</b>	<b>\$ 9,503,972.95</b>	<b>\$ 7,761,668.00</b>	<b>\$ 7,394,203.00</b>	<b>\$ 7,394,203.00</b>
1163	<b>TOTAL SCHOOL EXPENSES</b>	<b>\$20,316,648.00</b>	<b>\$21,002,095.00</b>	<b>\$21,053,029.72</b>	<b>\$21,029,838.00</b>	<b>\$19,428,568.00</b>	<b>\$19,428,568.00</b>
1164							
1165	<b>CITY OF GARDNER TOTAL</b>	<b>\$50,444,533.60</b>	<b>\$52,818,711.71</b>	<b>\$53,608,487.42</b>	<b>\$51,829,379.00</b>	<b>\$51,201,018.00</b>	<b>\$51,201,018.00</b>
1166							
1167							
1168							
1169							
1170							
1171							
1172							
1173							
1174							
1175							
1176							